



**ELECTRONIC COPY**

LG657420491  
Report verification at igi.org



October 8, 2024

IGI Report Number **LG657420491**

Description **LABORATORY GROWN DIAMOND**

Shape and Cutting Style **SQUARE CUSHION BRILLIANT**

Measurements **7.81 X 7.44 X 4.56 MM**

**GRADING RESULTS**

Carat Weight **2.32 CARATS**

Color Grade **D**

Clarity Grade **VVS 1**

October 8, 2024

IGI Report Number **LG657420491**

Description **LABORATORY GROWN DIAMOND**

Shape and Cutting Style **SQUARE CUSHION BRILLIANT**

Measurements **7.81 X 7.44 X 4.56 MM**

**GRADING RESULTS**

Carat Weight **2.32 CARATS**

Color Grade **D**

Clarity Grade **VVS 1**

**ADDITIONAL GRADING INFORMATION**

Polish **EXCELLENT**

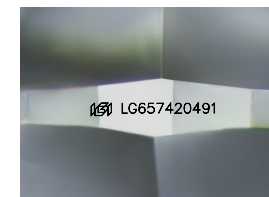
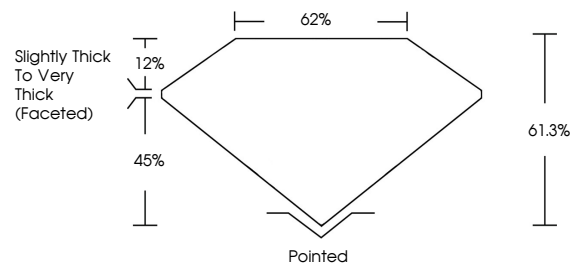
Symmetry **EXCELLENT**

Fluorescence **NONE**

Inscription(s) **IGI LG657420491**

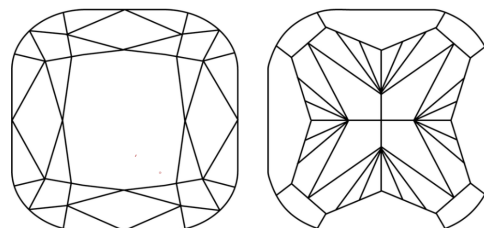
Comments: This Laboratory Grown Diamond was created by Chemical Vapor Deposition (CVD) growth process. Type IIa

**PROPORTIONS**



Sample Image Used

**CLARITY CHARACTERISTICS**



**KEY TO SYMBOLS**

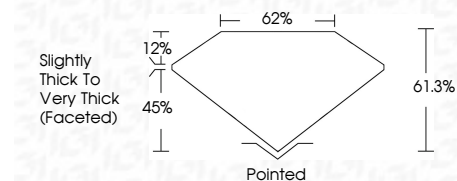
Red symbols indicate internal characteristics.  
Green symbols indicate external characteristics.

**COLOR**

D E F G H I J Faint Very Light Light

**CLARITY**

IF	VS <sup>1-2</sup>	VS <sup>1-2</sup>	SI <sup>1-2</sup>	I <sup>1-3</sup>
Internally Flawless	Very Very Slightly Included	Very Slightly Included	Slightly Included	Included



**ADDITIONAL GRADING INFORMATION**

Polish **EXCELLENT**

Symmetry **EXCELLENT**

Fluorescence **NONE**

Inscription(s) **IGI LG657420491**

Comments: This Laboratory Grown Diamond was created by Chemical Vapor Deposition (CVD) growth process. Type IIa



**IGI**



October 8, 2024  
IGI Report No LG657420491  
**SQUARE CUSHION BRILLIANT**

7.81 X 7.44 X 4.56 MM

2.32 CARATS  
D

Carat Weight  
Color Grade  
Clarity Grade  
Table  
Depth  
Girdle  
Slightly Thick To Very Thick (Faceted)

Pointed  
EXCELLENT  
EXCELLENT  
NONE  
IGI LG657420491

Comments: This Laboratory Grown Diamond was created by Chemical Vapor Deposition (CVD) growth process. Type IIa