



ELECTRONIC COPY

LG657422647
Report verification at igi.org



October 7, 2024

IGI Report Number **LG657422647**

Description **LABORATORY GROWN DIAMOND**

Shape and Cutting Style **PRINCESS CUT**

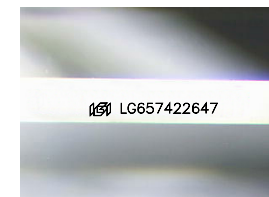
Measurements **6.41 X 6.33 X 4.58 MM**

GRADING RESULTS

Carat Weight **1.67 CARAT**

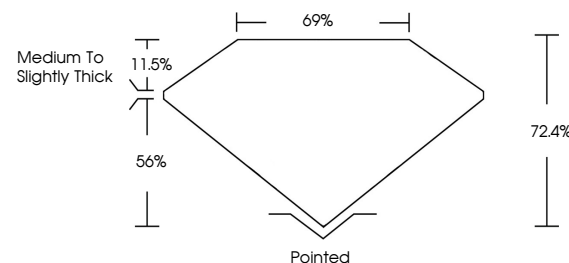
Color Grade **E**

Clarity Grade **VS 1**

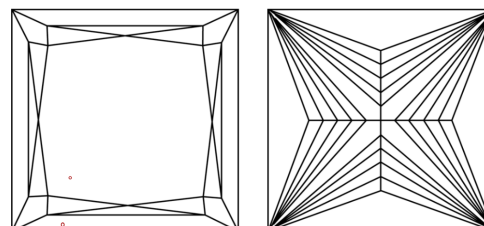


Sample Image Used

PROPORTIONS



CLARITY CHARACTERISTICS



KEY TO SYMBOLS

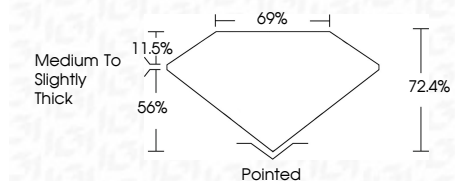
Red symbols indicate internal characteristics.
Green symbols indicate external characteristics.

COLOR

D E F G H I J Faint Very Light Light

CLARITY

IF	VS ¹⁻²	VS ¹⁻²	SI ¹⁻²	I ¹⁻³
Internally Flawless	Very Very Slightly Included	Very Slightly Included	Slightly Included	Included



ADDITIONAL GRADING INFORMATION

Polish **EXCELLENT**

Symmetry **EXCELLENT**

Fluorescence **NONE**

Inscription(s) **IGI LG657422647**

Comments: This Laboratory Grown Diamond was created by Chemical Vapor Deposition (CVD) growth process. Type IIa



IGI



October 7, 2024
IGI Report No LG657422647
PRINCESS CUT

6.41 X 6.33 X 4.58 MM

Carat Weight 1.67 CARAT
Color Grade E
Clarity Grade VS 1
Depth 72.4%
Table 56%
Girdle 69%
Culet Medium to Slightly Thick
Pointed
Polish EXCELLENT
Symmetry EXCELLENT
Fluorescence NONE
Inscription(s) IGI LG657422647

Comments: This Laboratory Grown Diamond was created by Chemical Vapor Deposition (CVD) growth process. Type IIa