



ELECTRONIC COPY

LG657423409
Report verification at igi.org



October 5, 2024

IGI Report Number **LG657423409**

Description **LABORATORY GROWN DIAMOND**

Shape and Cutting Style **EMERALD CUT**

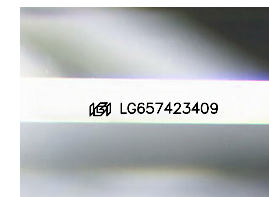
Measurements **11.31 X 8.08 X 5.44 MM**

GRADING RESULTS

Carat Weight **5.05 CARATS**

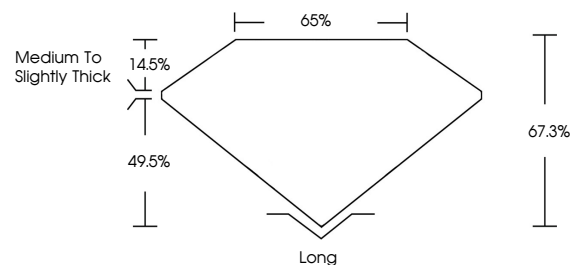
Color Grade **D**

Clarity Grade **VVS 2**

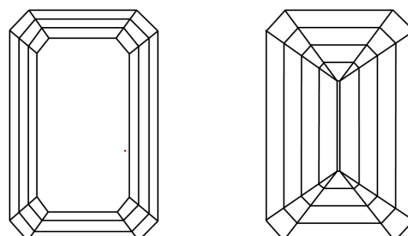


Sample Image Used

PROPORTIONS



CLARITY CHARACTERISTICS



KEY TO SYMBOLS

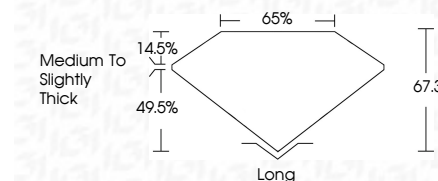
Red symbols indicate internal characteristics.
Green symbols indicate external characteristics.

COLOR

D E F G H I J Faint Very Light Light

CLARITY

IF	VS ¹⁻²	VS ¹⁻²	SI ¹⁻²	I ¹⁻³
Internally Flawless	Very Very Slightly Included	Very Slightly Included	Slightly Included	Included



ADDITIONAL GRADING INFORMATION

Polish **EXCELLENT**

Symmetry **EXCELLENT**

Fluorescence **NONE**

Inscription(s) **IGI LG657423409**

Comments: This Laboratory Grown Diamond was created by Chemical Vapor Deposition (CVD) growth process. Type IIa



IGI

October 5, 2024
IGI Report No LG657423409
EMERALD CUT

5.05 CARATS
D
5.05 CARATS
D
VVS 2
67.3%
65%
Medium to Slightly Thick
Long
EXCELLENT
EXCELLENT
NONE
IGI LG657423409

Comments: This Laboratory Grown Diamond was created by Chemical Vapor Deposition (CVD) growth process. Type IIa

