



**ELECTRONIC COPY**

LG657423866  
Report verification at igi.org



October 7, 2024

IGI Report Number **LG657423866**

Description **LABORATORY GROWN DIAMOND**

Shape and Cutting Style **PRINCESS CUT**

Measurements **7.14 X 7.08 X 5.16 MM**

**GRADING RESULTS**

Carat Weight **2.36 CARATS**

Color Grade **F**

Clarity Grade **VS 1**

October 7, 2024  
IGI Report Number **LG657423866**  
Description **LABORATORY GROWN DIAMOND**  
Shape and Cutting Style **PRINCESS CUT**  
Measurements **7.14 X 7.08 X 5.16 MM**

**GRADING RESULTS**

Carat Weight **2.36 CARATS**

Color Grade **F**

Clarity Grade **VS 1**

**ADDITIONAL GRADING INFORMATION**

Polish **EXCELLENT**

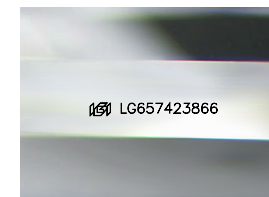
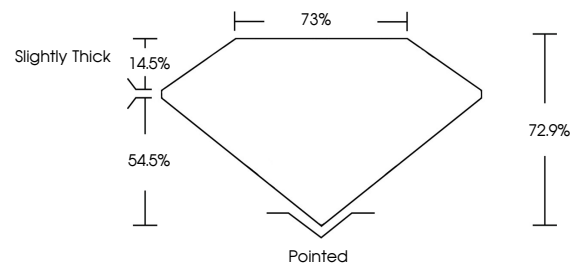
Symmetry **EXCELLENT**

Fluorescence **NONE**

Inscription(s) **LG657423866**

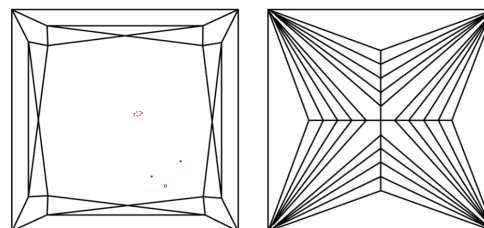
Comments: This Laboratory Grown Diamond was created by Chemical Vapor Deposition (CVD) growth process.  
Type IIa

**PROPORTIONS**



Sample Image Used

**CLARITY CHARACTERISTICS**



**KEY TO SYMBOLS**

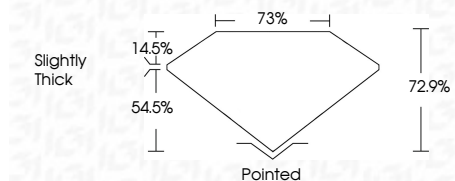
Red symbols indicate internal characteristics.  
Green symbols indicate external characteristics.

**COLOR**

D E F G H I J Faint Very Light Light

**CLARITY**

IF	VS <sup>1-2</sup>	VS <sup>1-2</sup>	SI <sup>1-2</sup>	I <sup>1-3</sup>
Internally Flawless	Very Very Slightly Included	Very Slightly Included	Slightly Included	Included



**ADDITIONAL GRADING INFORMATION**

Polish **EXCELLENT**

Symmetry **EXCELLENT**

Fluorescence **NONE**

Inscription(s) **LG657423866**

Comments: This Laboratory Grown Diamond was created by Chemical Vapor Deposition (CVD) growth process.  
Type IIa



**IGI**



October 7, 2024  
IGI Report No. **LG657423866**  
**PRINCESS CUT**

**2.36 CARATS**  
F

**7.14 X 7.08 X 5.16 MM**  
72.9%  
75%  
Slightly Thick

**Pointed**  
EXCELLENT  
EXCELLENT  
NONE  
None  
 **LG657423866**

Comments: This Laboratory Grown Diamond was created by Chemical Vapor Deposition (CVD) growth process.  
Type IIa