



ELECTRONIC COPY

LG657424171
Report verification at igi.org



October 9, 2024

IGI Report Number LG657424171

Description LABORATORY GROWN DIAMOND

Shape and Cutting Style ROUND BRILLIANT

Measurements 7.22 - 7.26 X 4.54 MM

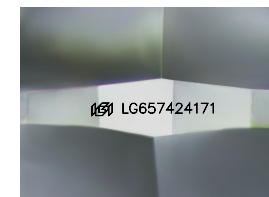
GRADING RESULTS

Carat Weight 1.50 CARAT

Color Grade G

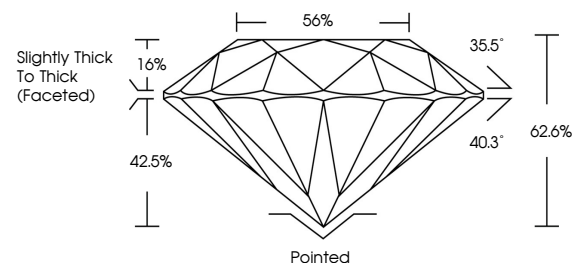
Clarity Grade VS 2

Cut Grade VERY GOOD

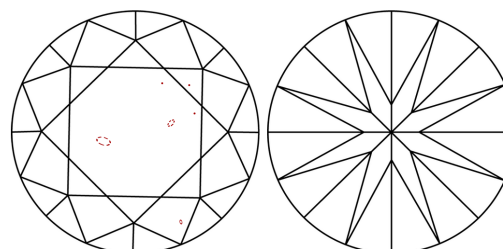


Sample Image Used

PROPORTIONS



CLARITY CHARACTERISTICS



KEY TO SYMBOLS

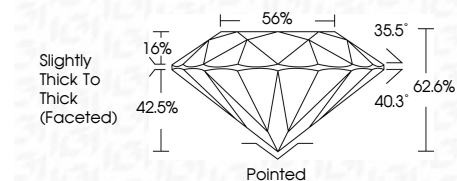
Red symbols indicate internal characteristics. Green symbols indicate external characteristics.

COLOR

D E F G H I J Faint Very Light Light

CLARITY

IF VS 1-2 VS 1-2 SI 1-2 I 1-3 Internally Flawless Very Very Slightly Included Very Slightly Included Slightly Included Included



ADDITIONAL GRADING INFORMATION

Polish EXCELLENT

Symmetry EXCELLENT

Fluorescence NONE

Inscription(s) IGI LG657424171

Comments: This Laboratory Grown Diamond was created by Chemical Vapor Deposition (CVD) growth process. Type IIa



IGI



Summary table of report details: October 9, 2024, IGI Report No LG657424171, ROUND BRILLIANT, 1.50 CARAT, G, VS 2, VERY GOOD, 7.22 - 7.26 X 4.54 MM, Slightly Thick To Thick (Faceted), Pointed, EXCELLENT, EXCELLENT, NONE, IGI LG657424171. Comments: This Laboratory Grown Diamond was created by Chemical Vapor Deposition (CVD) growth process. Type IIa