



ELECTRONIC COPY

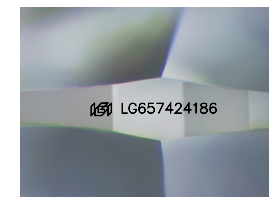
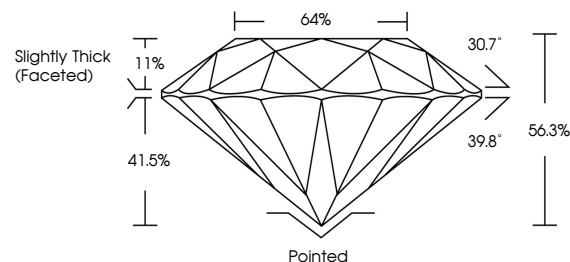
LG657424186
Report verification at igi.org



October 8, 2024
IGI Report Number LG657424186
Description LABORATORY GROWN DIAMOND
Shape and Cutting Style ROUND BRILLIANT
Measurements 8.30 - 8.33 X 4.69 MM
GRADING RESULTS
Carat Weight 2.01 CARATS
Color Grade G
Clarity Grade VS 1
Cut Grade VERY GOOD

October 8, 2024
IGI Report Number LG657424186
Description LABORATORY GROWN DIAMOND
Shape and Cutting Style ROUND BRILLIANT
Measurements 8.30 - 8.33 X 4.69 MM

PROPORTIONS

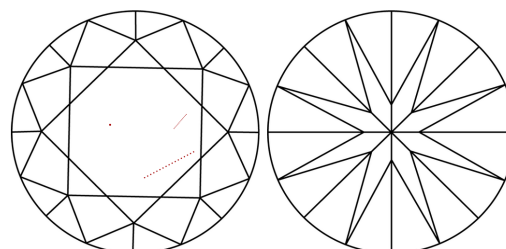


Sample Image Used

GRADING RESULTS

Carat Weight 2.01 CARATS
Color Grade G
Clarity Grade VS 1
Cut Grade VERY GOOD

CLARITY CHARACTERISTICS



KEY TO SYMBOLS

Red symbols indicate internal characteristics.
Green symbols indicate external characteristics.

ADDITIONAL GRADING INFORMATION

Polish EXCELLENT
Symmetry EXCELLENT
Fluorescence NONE
Inscription(s) IGI LG657424186

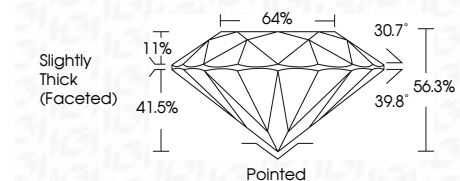
Comments: This Laboratory Grown Diamond was created by Chemical Vapor Deposition (CVD) growth process. Type IIa

COLOR

D E F G H I J Faint Very Light Light

CLARITY

IF VS 1-2 VS 1-2 SI 1-2 I 1-3
Internally Flawless Very Very Slightly Included Very Slightly Included Slightly Included Included



ADDITIONAL GRADING INFORMATION

Polish EXCELLENT
Symmetry EXCELLENT
Fluorescence NONE
Inscription(s) IGI LG657424186
Comments: This Laboratory Grown Diamond was created by Chemical Vapor Deposition (CVD) growth process. Type IIa



Summary table with columns for Date, Report No, Shape, Carat Weight, Color Grade, Clarity Grade, Depth, Table, Girdle, Culet, Polish, Symmetry, Fluorescence, Incriptions(s).

Comments: This Laboratory Grown Diamond was created by Chemical Vapor Deposition (CVD) growth process. Type IIa