



ELECTRONIC COPY

LG657424246
Report verification at igi.org



October 8, 2024

IGI Report Number LG657424246

Description LABORATORY GROWN DIAMOND

Shape and Cutting Style ROUND BRILLIANT

Measurements 7.26 - 7.28 X 4.47 MM

GRADING RESULTS

Carat Weight 1.50 CARAT

Color Grade F

Clarity Grade VS 2

Cut Grade VERY GOOD

October 8, 2024
IGI Report Number LG657424246
Description LABORATORY GROWN DIAMOND
Shape and Cutting Style ROUND BRILLIANT
Measurements 7.26 - 7.28 X 4.47 MM

GRADING RESULTS

Carat Weight 1.50 CARAT

Color Grade F

Clarity Grade VS 2

Cut Grade VERY GOOD

ADDITIONAL GRADING INFORMATION

Polish EXCELLENT

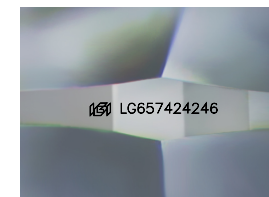
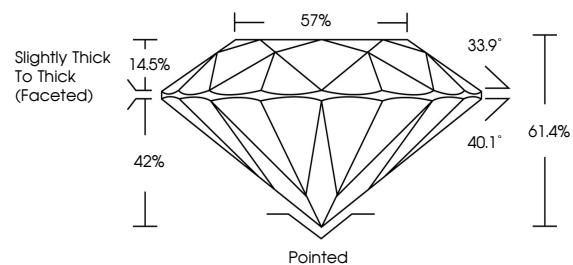
Symmetry EXCELLENT

Fluorescence NONE

Inscription(s) IGI LG657424246

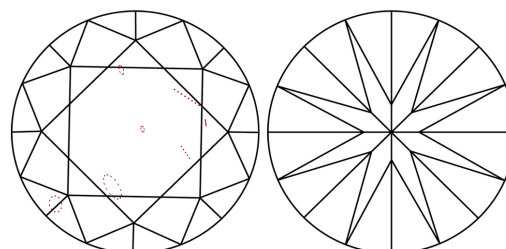
Comments: This Laboratory Grown Diamond was created by Chemical Vapor Deposition (CVD) growth process. Type IIa

PROPORTIONS



Sample Image Used

CLARITY CHARACTERISTICS



KEY TO SYMBOLS

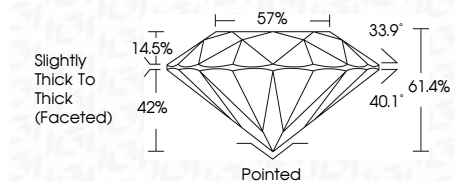
Red symbols indicate internal characteristics. Green symbols indicate external characteristics.

COLOR

D E F G H I J Faint Very Light Light

CLARITY

IF VS 1-2 VS 1-2 SI 1-2 I 1-3
Internally Flawless Very Very Slightly Included Very Slightly Included Slightly Included Included



ADDITIONAL GRADING INFORMATION

Polish EXCELLENT

Symmetry EXCELLENT

Fluorescence NONE

Inscription(s) IGI LG657424246

Comments: This Laboratory Grown Diamond was created by Chemical Vapor Deposition (CVD) growth process. Type IIa



IGI



Summary table of report details: October 8, 2024, IGI Report No LG657424246, ROUND BRILLIANT, 7.26 - 7.28 X 4.47 MM, 1.50 CARAT, F, VS 2, VERY GOOD, 61.4%, 57%, Slightly Thick To Thick (Faceted), Pointed, EXCELLENT, EXCELLENT, NONE, IGI LG657424246. Comments: This Laboratory Grown Diamond was created by Chemical Vapor Deposition (CVD) growth process. Type IIa