



**ELECTRONIC COPY**

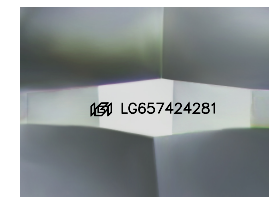
LG657424281  
Report verification at igi.org



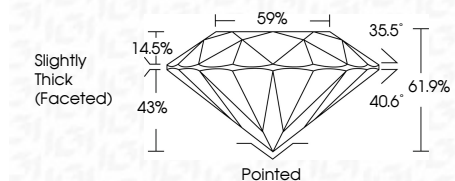
October 9, 2024  
IGI Report Number **LG657424281**  
Description **LABORATORY GROWN DIAMOND**  
Shape and Cutting Style **ROUND BRILLIANT**  
Measurements **8.69 - 8.72 X 5.39 MM**

**GRADING RESULTS**

Carat Weight **2.56 CARATS**  
Color Grade **G**  
Clarity Grade **VS 2**  
Cut Grade **EXCELLENT**



Sample Image Used



**ADDITIONAL GRADING INFORMATION**

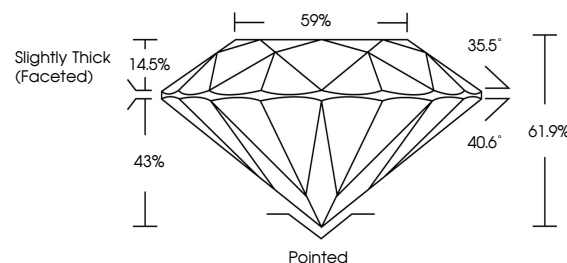
Polish **EXCELLENT**  
Symmetry **EXCELLENT**  
Fluorescence **NONE**  
Inscription(s) **IGI LG657424281**  
Comments: This Laboratory Grown Diamond was created by Chemical Vapor Deposition (CVD) growth process. Type IIa



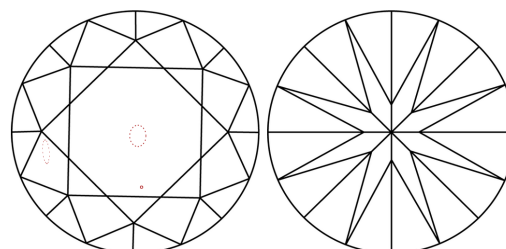
October 9, 2024	IGI Report No LG657424281	ROUND BRILLIANT
8.69 - 8.72 X 5.39 MM	2.56 CARATS	G
Color Grade	VS 2	EXCELLENT
Clarity Grade	61.9%	EXCELLENT
Depth	43%	EXCELLENT
Table	59%	Slightly Thick (Faceted)
Grade		Pointed
Culet		EXCELLENT
Polish		EXCELLENT
Symmetry		EXCELLENT
Fluorescence		NONE
Inscription(s)		IGI LG657424281

Comments: This Laboratory Grown Diamond was created by Chemical Vapor Deposition (CVD) growth process. Type IIa

**PROPORTIONS**



**CLARITY CHARACTERISTICS**



**KEY TO SYMBOLS**

Red symbols indicate internal characteristics.  
Green symbols indicate external characteristics.

**COLOR**

D E F G H I J Faint Very Light Light

**CLARITY**

IF	VS <sup>1-2</sup>	VS <sup>1-2</sup>	SI <sup>1-2</sup>	I <sup>1-3</sup>
Internally Flawless	Very Very Slightly Included	Very Slightly Included	Slightly Included	Included

