



ELECTRONIC COPY

LG657425429
Report verification at igi.org



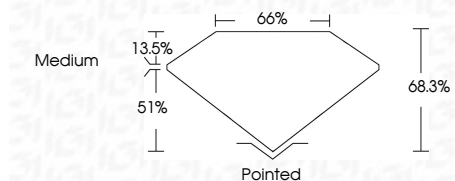
October 7, 2024
IGI Report Number LG657425429
Description LABORATORY GROWN DIAMOND

Shape and Cutting Style CUT CORNERED RECTANGULAR MODIFIED BRILLIANT

Measurements 9.52 X 6.66 X 4.55 MM

GRADING RESULTS

Carat Weight 2.50 CARATS
Color Grade D
Clarity Grade VS 1



ADDITIONAL GRADING INFORMATION

Polish EXCELLENT
Symmetry EXCELLENT
Fluorescence NONE
Inscription(s) LG657425429

Comments: This Laboratory Grown Diamond was created by Chemical Vapor Deposition (CVD) growth process. Type IIa



October 7, 2024
IGI Report No LG657425429
CUT CORNERED RECT. MODIFIED BRILLIANT
9.52 X 6.66 X 4.55 MM
2.50 CARATS
D
VS 1
68.3%
51%
Medium
Pointed
EXCELLENT
EXCELLENT
NONE
LG657425429
Comments: This Laboratory Grown Diamond was created by Chemical Vapor Deposition (CVD) growth process. Type IIa

October 7, 2024
IGI Report Number LG657425429
Description LABORATORY GROWN DIAMOND
Shape and Cutting Style CUT CORNERED RECTANGULAR MODIFIED BRILLIANT
Measurements 9.52 X 6.66 X 4.55 MM

GRADING RESULTS

Carat Weight 2.50 CARATS
Color Grade D
Clarity Grade VS 1

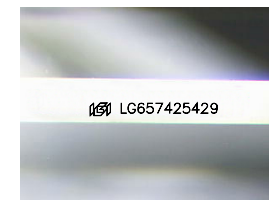
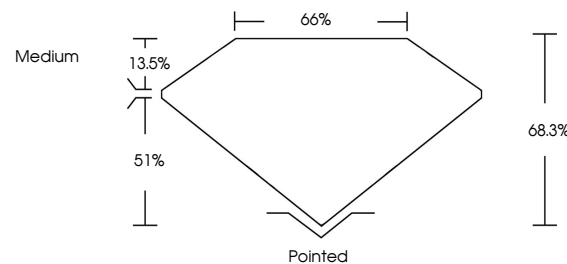
ADDITIONAL GRADING INFORMATION

Polish EXCELLENT
Symmetry EXCELLENT
Fluorescence NONE

Inscription(s) LG657425429

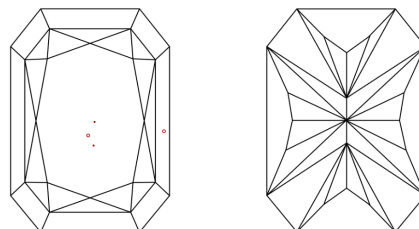
Comments: This Laboratory Grown Diamond was created by Chemical Vapor Deposition (CVD) growth process. Type IIa

PROPORTIONS



Sample Image Used

CLARITY CHARACTERISTICS



KEY TO SYMBOLS

Red symbols indicate internal characteristics.
Green symbols indicate external characteristics.

COLOR

D E F G H I J Faint Very Light Light

CLARITY

IF VS 1-2 VS 1-2 SI 1-2 I 1-3
Internally Flawless Very Very Slightly Included Very Slightly Included Slightly Included Included