



**ELECTRONIC COPY**

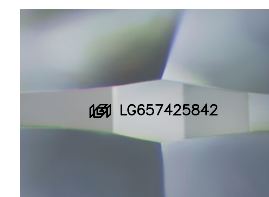
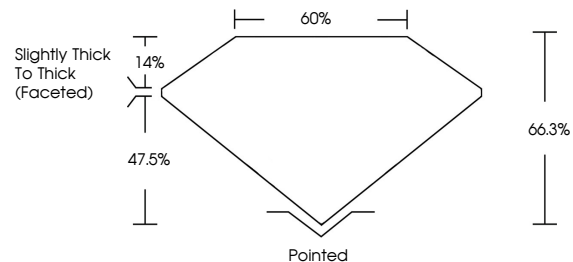
**LABORATORY GROWN DIAMOND REPORT**

October 7, 2024  
 IGI Report Number **LG657425842**  
 Description **LABORATORY GROWN DIAMOND**  
 Shape and Cutting Style **CUSHION MODIFIED BRILLIANT**  
 Measurements **8.78 X 6.61 X 4.38 MM**  
**GRADING RESULTS**  
 Carat Weight **2.00 CARATS**  
 Color Grade **D**  
 Clarity Grade **VS 1**

**ADDITIONAL GRADING INFORMATION**

Polish **EXCELLENT**  
 Symmetry **EXCELLENT**  
 Fluorescence **NONE**  
 Inscription(s) **IGI LG657425842**  
 Comments: This Laboratory Grown Diamond was created by Chemical Vapor Deposition (CVD) growth process. Type IIa

**PROPORTIONS**



Sample Image Used

**COLOR**

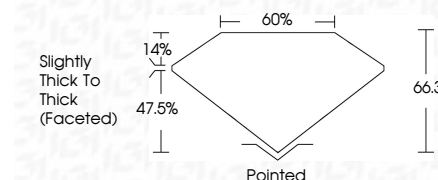
D E F G H I J Faint Very Light Light

**CLARITY**

IF	VS <sup>1-2</sup>	VS <sup>1-2</sup>	SI <sup>1-2</sup>	I <sup>1-3</sup>
Internally Flawless	Very Very Slightly Included	Very Slightly Included	Slightly Included	Included



October 7, 2024  
 IGI Report Number **LG657425842**  
 Description **LABORATORY GROWN DIAMOND**  
 Shape and Cutting Style **CUSHION MODIFIED BRILLIANT**  
 Measurements **8.78 X 6.61 X 4.38 MM**  
**GRADING RESULTS**  
 Carat Weight **2.00 CARATS**  
 Color Grade **D**  
 Clarity Grade **VS 1**



**ADDITIONAL GRADING INFORMATION**

Polish **EXCELLENT**  
 Symmetry **EXCELLENT**  
 Fluorescence **NONE**  
 Inscription(s) **IGI LG657425842**  
 Comments: This Laboratory Grown Diamond was created by Chemical Vapor Deposition (CVD) growth process. Type IIa



October 7, 2024  
 IGI Report No **LG657425842**  
**CUSHION MODIFIED BRILLIANT**  
**8.78 X 6.61 X 4.38 MM**  
 Carat Weight **2.00 CARATS**  
 Color Grade **D**  
 Clarity Grade **VS 1**  
 Depth **66.3%**  
 Table **60%**  
 Girdle **Slightly Thick To Thick (Faceted)**  
 Culet **Pointed**  
 Polish **EXCELLENT**  
 Symmetry **EXCELLENT**  
 Fluorescence **NONE**  
 Inscription(s) **IGI LG657425842**  
 Comments: This Laboratory Grown Diamond was created by Chemical Vapor Deposition (CVD) growth process. Type IIa