



ELECTRONIC COPY

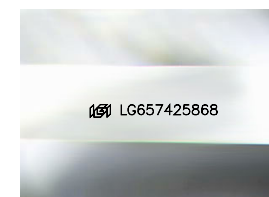
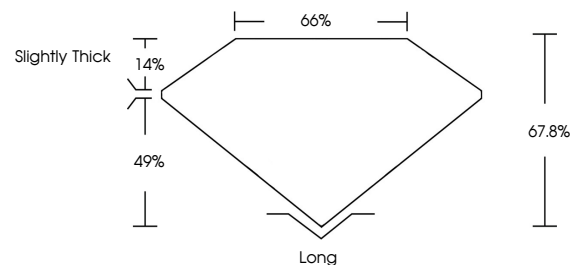
LG657425868
Report verification at igi.org



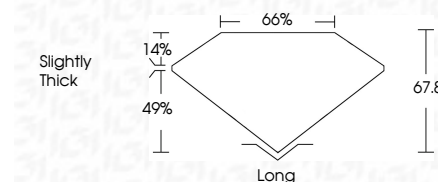
October 8, 2024
IGI Report Number **LG657425868**
Description **LABORATORY GROWN DIAMOND**
Shape and Cutting Style **EMERALD CUT**
Measurements **10.78 X 7.40 X 5.02 MM**
GRADING RESULTS
Carat Weight **4.03 CARATS**
Color Grade **E**
Clarity Grade **VS 1**

October 8, 2024
IGI Report Number **LG657425868**
Description **LABORATORY GROWN DIAMOND**
Shape and Cutting Style **EMERALD CUT**
Measurements **10.78 X 7.40 X 5.02 MM**
GRADING RESULTS
Carat Weight **4.03 CARATS**
Color Grade **E**
Clarity Grade **VS 1**

PROPORTIONS



Sample Image Used



ADDITIONAL GRADING INFORMATION
Polish **EXCELLENT**
Symmetry **EXCELLENT**
Fluorescence **NONE**
Inscription(s) **IGI LG657425868**

Comments: This Laboratory Grown Diamond was created by Chemical Vapor Deposition (CVD) growth process. Type IIa

ADDITIONAL GRADING INFORMATION
Polish **EXCELLENT**
Symmetry **EXCELLENT**
Fluorescence **NONE**
Inscription(s) **IGI LG657425868**
Comments: This Laboratory Grown Diamond was created by Chemical Vapor Deposition (CVD) growth process. Type IIa

COLOR

D E F G H I J Faint Very Light Light

CLARITY

IF	VS ¹⁻²	VS ¹⁻²	SI ¹⁻²	I ¹⁻³
Internally Flawless	Very Very Slightly Included	Very Slightly Included	Slightly Included	Included



October 8, 2024
IGI Report No LG657425868
EMERALD CUT
10.78 X 7.40 X 5.02 MM
4.03 CARATS
E
VS 1
67.8%
66%
Slightly Thick
Long
EXCELLENT
EXCELLENT
NONE
IGI LG657425868
Comments: This Laboratory Grown Diamond was created by Chemical Vapor Deposition (CVD) growth process. Type IIa

