



**INTERNATIONAL  
GEMOLOGICAL  
INSTITUTE**

**ELECTRONIC COPY**

**LABORATORY GROWN  
DIAMOND REPORT**

**IGI LABORATORY GROWN  
DIAMOND ID REPORT**

November 11, 2024  
IGI Report Number **LG657435419**

**OVAL BRILLIANT**  
**14.89 X 10.32 X 6.72 MM**  
Carat Weight 6.78 CARATS  
Color Grade FANCY VIVID ORANGY YELLOW  
Clarity Grade VS 1  
Cut Grade GOOD  
Polish VERY GOOD  
Symmetry EXCELLENT  
Fluorescence SLIGHT  
Inscription(s) LG657435419

Comments: This Laboratory Grown Diamond was created by Chemical Vapor Deposition (CVD) growth process. Type IIa. Indications of post-growth treatment.

**LABORATORY GROWN DIAMOND REPORT**

**IGI LABORATORY GROWN DIAMOND IDENTIFICATION REPORT**

November 11, 2024  
IGI Report Number LG657435419  
Description LABORATORY GROWN DIAMOND  
Shape and Cutting Style OVAL BRILLIANT  
Measurements 14.89 X 10.32 X 6.72 MM

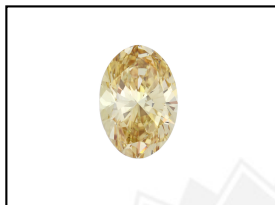
**GRADING RESULTS**

Carat Weight 6.78 CARATS  
Color Grade FANCY VIVID ORANGY YELLOW  
Clarity Grade VS 1  
Cut Grade GOOD

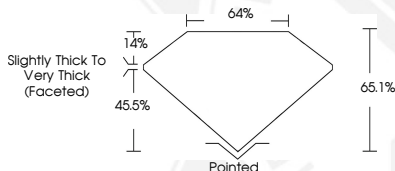
**ADDITIONAL GRADING INFORMATION**

Polish VERY GOOD  
Symmetry EXCELLENT  
Fluorescence SLIGHT  
Inscription(s) LG657435419

Comments: This Laboratory Grown Diamond was created by Chemical Vapor Deposition (CVD) growth process. Type IIa. Indications of post-growth treatment.



**LASERSCRIBE<sup>SM</sup>**  
Sample Images Used



**IGI LABORATORY GROWN  
DIAMOND ID REPORT**

November 11, 2024  
IGI Report Number **LG657435419**

**OVAL BRILLIANT**  
**14.89 X 10.32 X 6.72 MM**  
Carat Weight 6.78 CARATS  
Color Grade FANCY VIVID ORANGY YELLOW  
Clarity Grade VS 1  
Cut Grade GOOD  
Polish VERY GOOD  
Symmetry EXCELLENT  
Fluorescence SLIGHT  
Inscription(s) LG657435419

Comments: This Laboratory Grown Diamond was created by Chemical Vapor Deposition (CVD) growth process. Type IIa. Indications of post-growth treatment.

THIS DOCUMENT WAS PRODUCED WITH THE FOLLOWING SECURITY MEASURES: SPECIAL DOCUMENT PAPER, INK SCREENS, WATERMARK, BACKGROUND DESIGN, HOLOGRAM AND OTHER SECURITY FEATURES NOT LISTED AND DO EXCEED DOCUMENT SECURITY INDUSTRY GUIDELINES.

For terms & conditions and to verify this report, please visit [www.igi.org](http://www.igi.org)