



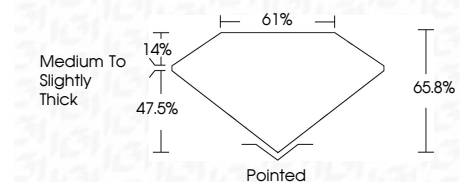
**ELECTRONIC COPY**

LG657458135  
Report verification at igi.org



October 5, 2024  
IGI Report Number **LG657458135**  
Description **LABORATORY GROWN DIAMOND**  
Shape and Cutting Style **SQUARE EMERALD CUT**  
Measurements **6.91 X 6.91 X 4.55 MM**

**GRADING RESULTS**  
Carat Weight **2.03 CARATS**  
Color Grade **D**  
Clarity Grade **VVS 2**



**ADDITIONAL GRADING INFORMATION**  
Polish **EXCELLENT**  
Symmetry **EXCELLENT**  
Fluorescence **NONE**  
Inscription(s) **IGI LG657458135**  
Comments: This Laboratory Grown Diamond was created by Chemical Vapor Deposition (CVD) growth process. Type IIa



October 5, 2024  
IGI Report No LG657458135  
**SQUARE EMERALD CUT**  
6.91 X 6.91 X 4.55 MM  
2.03 CARATS  
D  
VVS 2  
65.8%  
14%  
47.5%  
Medium to Slightly Thick  
Pointed  
EXCELLENT  
EXCELLENT  
NONE  
IGI LG657458135  
Comments: This Laboratory Grown Diamond was created by Chemical Vapor Deposition (CVD) growth process. Type IIa

**LABORATORY GROWN DIAMOND REPORT**

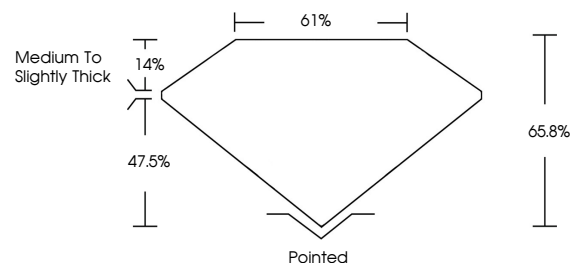
October 5, 2024  
IGI Report Number **LG657458135**  
Description **LABORATORY GROWN DIAMOND**  
Shape and Cutting Style **SQUARE EMERALD CUT**  
Measurements **6.91 X 6.91 X 4.55 MM**

**GRADING RESULTS**  
Carat Weight **2.03 CARATS**  
Color Grade **D**  
Clarity Grade **VVS 2**

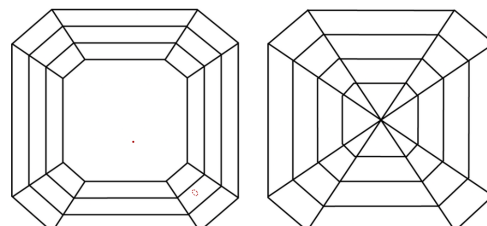
**ADDITIONAL GRADING INFORMATION**  
Polish **EXCELLENT**  
Symmetry **EXCELLENT**  
Fluorescence **NONE**  
Inscription(s) **IGI LG657458135**

Comments: This Laboratory Grown Diamond was created by Chemical Vapor Deposition (CVD) growth process. Type IIa

**PROPORTIONS**

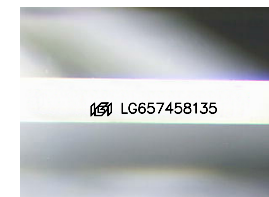


**CLARITY CHARACTERISTICS**



**KEY TO SYMBOLS**

Red symbols indicate internal characteristics.  
Green symbols indicate external characteristics.



Sample Image Used

**COLOR**

D E F G H I J Faint Very Light Light

**CLARITY**

IF	VS <sup>1-2</sup>	VS <sup>1-2</sup>	SI <sup>1-2</sup>	I <sup>1-3</sup>
Internally Flawless	Very Very Slightly Included	Very Slightly Included	Slightly Included	Included

