



ELECTRONIC COPY

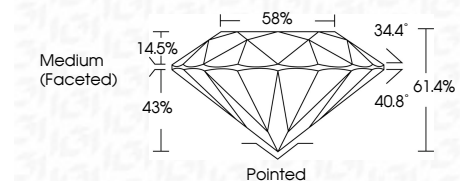
LG657459862 Report verification at igi.org



October 7, 2024 IGI Report Number LG657459862 Description LABORATORY GROWN DIAMOND Shape and Cutting Style ROUND BRILLIANT Measurements 6.57 - 6.61 X 4.04 MM

GRADING RESULTS

Carat Weight 1.08 CARAT Color Grade D Clarity Grade VVS 2 Cut Grade IDEAL



ADDITIONAL GRADING INFORMATION

Polish EXCELLENT Symmetry EXCELLENT Fluorescence NONE Inscription(s) IGI LG657459862 Comments: As Grown - No indication of post-growth treatment. This Laboratory Grown Diamond was created by High Pressure High Temperature (HPHT) growth process. Type II



October 7, 2024 IGI Report No LG657459862 ROUND BRILLIANT 6.57 - 6.61 X 4.04 MM 1.08 CARAT D VVS 2 IDEAL 6.57 - 6.61 X 4.04 MM Medium (Faceted) 14.5% 58% 34.4° 40.8° 61.4% 43% Pointed EXCELLENT EXCELLENT NONE IGI LG657459862

October 7, 2024 IGI Report Number LG657459862 Description LABORATORY GROWN DIAMOND Shape and Cutting Style ROUND BRILLIANT Measurements 6.57 - 6.61 X 4.04 MM

GRADING RESULTS

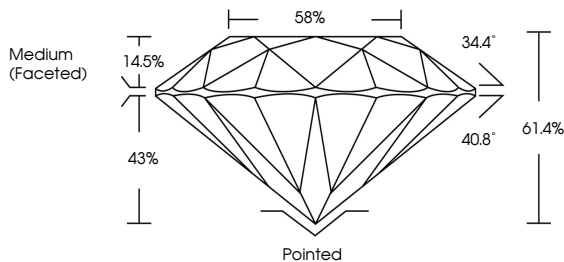
Carat Weight 1.08 CARAT Color Grade D Clarity Grade VVS 2 Cut Grade IDEAL

ADDITIONAL GRADING INFORMATION

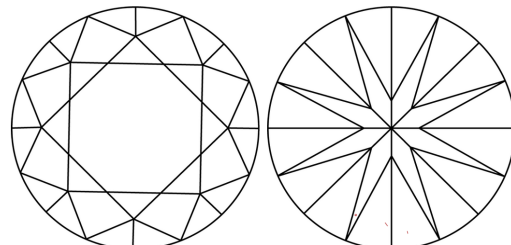
Polish EXCELLENT Symmetry EXCELLENT Fluorescence NONE Inscription(s) IGI LG657459862

Comments: As Grown - No indication of post-growth treatment. This Laboratory Grown Diamond was created by High Pressure High Temperature (HPHT) growth process. Type II

PROPORTIONS



CLARITY CHARACTERISTICS



KEY TO SYMBOLS

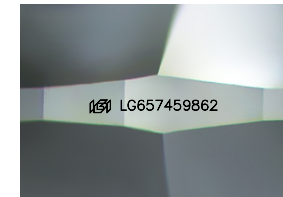
Red symbols indicate internal characteristics. Green symbols indicate external characteristics.

COLOR

D E F G H I J Faint Very Light Light

CLARITY

IF VVS 1-2 VS 1-2 SI 1-2 I 1-3 Internally Flawless Very Very Slightly Included Very Slightly Included Slightly Included Included



Sample Image Used

Color and Clarity scale tables with corresponding symbols and descriptions.



October 7, 2024 IGI Report No LG657459862 ROUND BRILLIANT 6.57 - 6.61 X 4.04 MM 1.08 CARAT D VVS 2 IDEAL 6.57 - 6.61 X 4.04 MM Medium (Faceted) 14.5% 58% 34.4° 40.8° 61.4% 43% Pointed EXCELLENT EXCELLENT NONE IGI LG657459862