



**ELECTRONIC COPY**

LG657460817  
Report verification at igi.org



October 9, 2024

IGI Report Number **LG657460817**

Description **LABORATORY GROWN DIAMOND**

Shape and Cutting Style **CUT CORNERED  
RECTANGULAR MODIFIED  
BRILLIANT**

Measurements **8.80 X 6.20 X 4.16 MM**

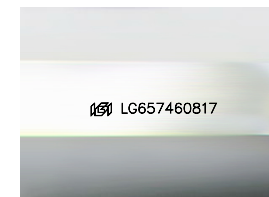
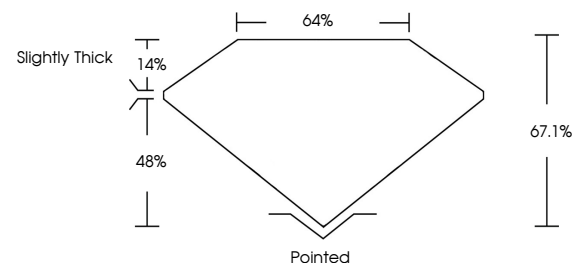
**GRADING RESULTS**

Carat Weight **2.03 CARATS**

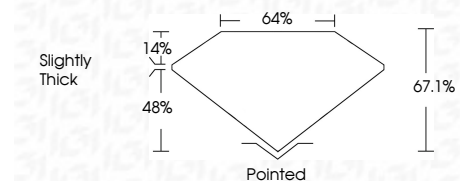
Color Grade **E**

Clarity Grade **VVS 1**

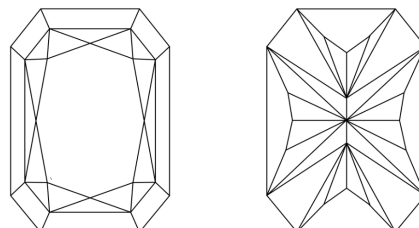
**PROPORTIONS**



Sample Image Used



**CLARITY CHARACTERISTICS**



**KEY TO SYMBOLS**

Red symbols indicate internal characteristics.  
Green symbols indicate external characteristics.

**COLOR**

D E F G H I J Faint Very Light Light

**CLARITY**

IF	VS <sup>1-2</sup>	VS <sup>1-2</sup>	SI <sup>1-2</sup>	I <sup>1-3</sup>
Internally Flawless	Very Very Slightly Included	Very Slightly Included	Slightly Included	Included

**ADDITIONAL GRADING INFORMATION**

Polish **EXCELLENT**

Symmetry **EXCELLENT**

Fluorescence **NONE**

Inscription(s) **IGI LG657460817**

Comments: This Laboratory Grown Diamond was created by Chemical Vapor Deposition (CVD) growth process. Type IIa



**IGI**



October 9, 2024  
IGI Report No LG657460817  
CUT CORNERED RECT. MODIFIED BRILLIANT  
8.80 X 6.20 X 4.16 MM  
2.03 CARATS  
E  
VVS 1  
67.1%  
64%  
Slightly Thick  
Pointed  
EXCELLENT  
EXCELLENT  
NONE  
IGI LG657460817  
Comments: This Laboratory Grown Diamond was created by Chemical Vapor Deposition (CVD) growth process. Type IIa