



ELECTRONIC COPY

LABORATORY GROWN DIAMOND REPORT

October 9, 2024  
IGI Report Number LG657461015  
Description LABORATORY GROWN DIAMOND  
Shape and Cutting Style ROUND BRILLIANT  
Measurements 6.48 - 6.50 X 4.01 MM

GRADING RESULTS

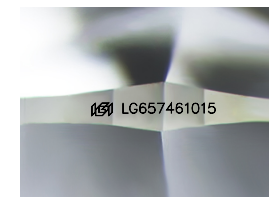
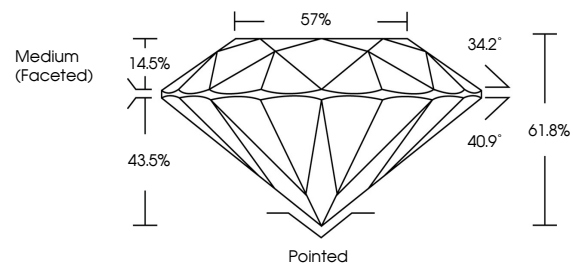
Carat Weight 1.04 CARAT  
Color Grade E  
Clarity Grade INTERNALLY FLAWLESS  
Cut Grade IDEAL

ADDITIONAL GRADING INFORMATION

Polish EXCELLENT  
Symmetry EXCELLENT  
Fluorescence NONE  
Inscription(s) IGI LG657461015

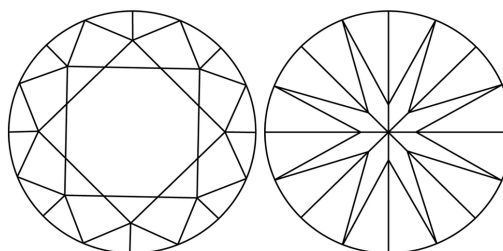
Comments: This Laboratory Grown Diamond was created by Chemical Vapor Deposition (CVD) growth process.  
Type IIa

PROPORTIONS



Sample Image Used

CLARITY CHARACTERISTICS



KEY TO SYMBOLS

Red symbols indicate internal characteristics.  
Green symbols indicate external characteristics.

COLOR

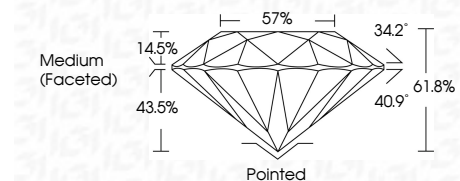
D E F G H I J Faint Very Light Light

CLARITY

IF VS 1-2 VS 1-2 SI 1-2 I 1-3  
Internally Flawless Very Very Slightly Included Very Slightly Included Slightly Included Included



October 9, 2024  
IGI Report Number LG657461015  
Description LABORATORY GROWN DIAMOND  
Shape and Cutting Style ROUND BRILLIANT  
Measurements 6.48 - 6.50 X 4.01 MM  
GRADING RESULTS  
Carat Weight 1.04 CARAT  
Color Grade E  
Clarity Grade INTERNALLY FLAWLESS  
Cut Grade IDEAL



ADDITIONAL GRADING INFORMATION

Polish EXCELLENT  
Symmetry EXCELLENT  
Fluorescence NONE  
Inscription(s) IGI LG657461015  
Comments: This Laboratory Grown Diamond was created by Chemical Vapor Deposition (CVD) growth process.  
Type IIa



IGI



October 9, 2024  
IGI Report No LG657461015  
ROUND BRILLIANT  
6.48 - 6.50 X 4.01 MM  
1.04 CARAT  
E  
Color Grade  
Clarity Grade  
Depth  
Table  
Girdle  
Medium (Faceted)  
Pointed  
EXCELLENT  
EXCELLENT  
NONE  
NONE  
IGI LG657461015  
Comments: This Laboratory Grown Diamond was created by Chemical Vapor Deposition (CVD) growth process.  
Type IIa