



**ELECTRONIC COPY**

LG657461105  
Report verification at igi.org



October 8, 2024

IGI Report Number **LG657461105**

Description **LABORATORY GROWN DIAMOND**

Shape and Cutting Style **CUT CORNERED  
RECTANGULAR MODIFIED  
BRILLIANT**

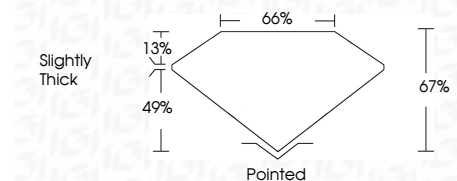
Measurements **8.85 X 6.19 X 4.15 MM**

**GRADING RESULTS**

Carat Weight **2.01 CARATS**

Color Grade **D**

Clarity Grade **VVS 2**



**ADDITIONAL GRADING INFORMATION**

Polish **EXCELLENT**

Symmetry **EXCELLENT**

Fluorescence **NONE**

Inscription(s) **IGI LG657461105**

Comments: This Laboratory Grown Diamond was created by Chemical Vapor Deposition (CVD) growth process. Type IIa



**IGI**

October 8, 2024  
IGI Report No LG657461105  
CUT CORNERED RECT. MODIFIED BRILLIANT  
8.85 X 6.19 X 4.15 MM  
2.01 CARATS  
D  
VVS 2  
67%  
49%  
Slightly Thick  
Pointed  
EXCELLENT  
EXCELLENT  
NONE  
IGI LG657461105  
Comments: This Laboratory Grown Diamond was created by Chemical Vapor Deposition (CVD) growth process. Type IIa

**LABORATORY GROWN DIAMOND REPORT**

October 8, 2024

IGI Report Number **LG657461105**

Description **LABORATORY GROWN DIAMOND**

Shape and Cutting Style **CUT CORNERED RECTANGULAR  
MODIFIED BRILLIANT**

Measurements **8.85 X 6.19 X 4.15 MM**

**GRADING RESULTS**

Carat Weight **2.01 CARATS**

Color Grade **D**

Clarity Grade **VVS 2**

**ADDITIONAL GRADING INFORMATION**

Polish **EXCELLENT**

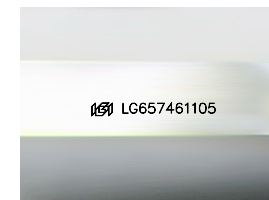
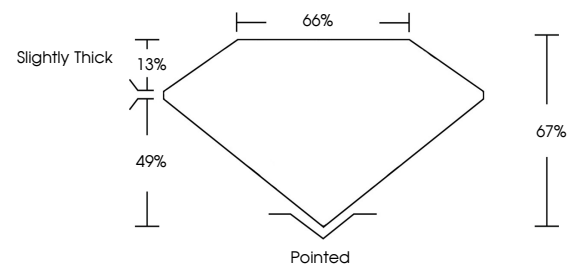
Symmetry **EXCELLENT**

Fluorescence **NONE**

Inscription(s) **IGI LG657461105**

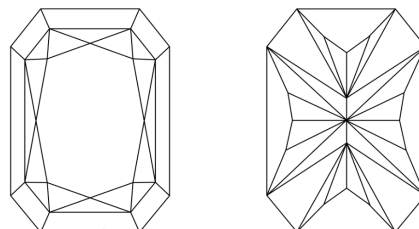
Comments: This Laboratory Grown Diamond was created by Chemical Vapor Deposition (CVD) growth process. Type IIa

**PROPORTIONS**



Sample Image Used

**CLARITY CHARACTERISTICS**



**KEY TO SYMBOLS**

Red symbols indicate internal characteristics.  
Green symbols indicate external characteristics.

**COLOR**

D E F G H I J Faint Very Light Light

**CLARITY**

IF	VS <sup>1-2</sup>	VS <sup>1-2</sup>	SI <sup>1-2</sup>	I <sup>1-3</sup>
Internally Flawless	Very Very Slightly Included	Very Slightly Included	Slightly Included	Included

