



**ELECTRONIC COPY**

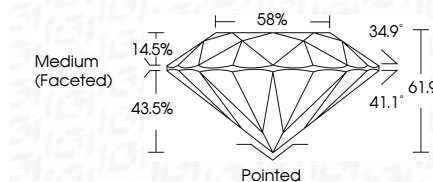
LG657461251  
Report verification at [igi.org](http://igi.org)



October 8, 2024  
IGI Report Number **LG657461251**  
Description **LABORATORY GROWN DIAMOND**  
Shape and Cutting Style **ROUND BRILLIANT**  
Measurements **6.39 - 6.42 X 3.97 MM**

**GRADING RESULTS**

Carat Weight **1.00 CARAT**  
Color Grade **D**  
Clarity Grade **VVS 2**  
Cut Grade **IDEAL**



**ADDITIONAL GRADING INFORMATION**

Polish **EXCELLENT**  
Symmetry **EXCELLENT**  
Fluorescence **NONE**  
Inscription(s) **IGI LG657461251**  
Comments: This Laboratory Grown Diamond was created by Chemical Vapor Deposition (CVD) growth process. Type IIa



|                       |                           |             |               |           |       |       |        |                  |         |           |           |      |                 |
|-----------------------|---------------------------|-------------|---------------|-----------|-------|-------|--------|------------------|---------|-----------|-----------|------|-----------------|
| October 8, 2024       | IGI Report No LG657461251 | 1.00 CARAT  | D             | VVS 2     | IDEAL | 61.9% | 58%    | Medium (Faceted) | Pointed | EXCELLENT | EXCELLENT | NONE | IGI LG657461251 |
| 6.39 - 6.42 X 3.97 MM | ROUND BRILLIANT           | Color Grade | Clarity Grade | Cut Grade | Depth | Table | Girdle |                  |         |           |           |      |                 |
| Carat Weight          |                           |             |               |           |       |       |        |                  |         |           |           |      |                 |
| Color Grade           |                           |             |               |           |       |       |        |                  |         |           |           |      |                 |
| Clarity Grade         |                           |             |               |           |       |       |        |                  |         |           |           |      |                 |
| Cut Grade             |                           |             |               |           |       |       |        |                  |         |           |           |      |                 |
| Depth                 |                           |             |               |           |       |       |        |                  |         |           |           |      |                 |
| Table                 |                           |             |               |           |       |       |        |                  |         |           |           |      |                 |
| Girdle                |                           |             |               |           |       |       |        |                  |         |           |           |      |                 |
| Culet                 |                           |             |               |           |       |       |        |                  |         |           |           |      |                 |
| Polish                |                           |             |               |           |       |       |        |                  |         |           |           |      |                 |
| Symmetry              |                           |             |               |           |       |       |        |                  |         |           |           |      |                 |
| Fluorescence          |                           |             |               |           |       |       |        |                  |         |           |           |      |                 |
| Inscription(s)        |                           |             |               |           |       |       |        |                  |         |           |           |      |                 |

Comments: This Laboratory Grown Diamond was created by Chemical Vapor Deposition (CVD) growth process. Type IIa

October 8, 2024  
IGI Report Number **LG657461251**  
Description **LABORATORY GROWN DIAMOND**  
Shape and Cutting Style **ROUND BRILLIANT**  
Measurements **6.39 - 6.42 X 3.97 MM**

**GRADING RESULTS**

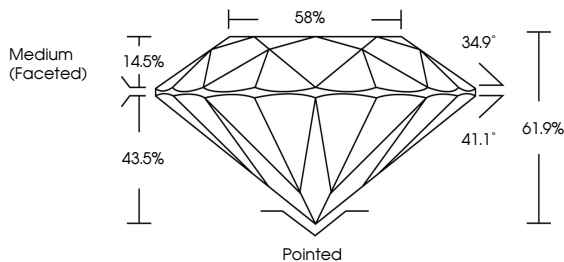
Carat Weight **1.00 CARAT**  
Color Grade **D**  
Clarity Grade **VVS 2**  
Cut Grade **IDEAL**

**ADDITIONAL GRADING INFORMATION**

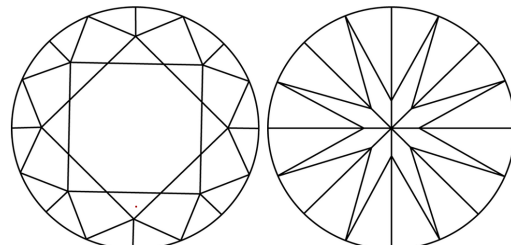
Polish **EXCELLENT**  
Symmetry **EXCELLENT**  
Fluorescence **NONE**  
Inscription(s) **IGI LG657461251**

Comments: This Laboratory Grown Diamond was created by Chemical Vapor Deposition (CVD) growth process. Type IIa

**PROPORTIONS**

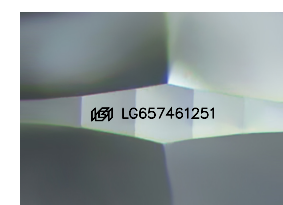


**CLARITY CHARACTERISTICS**



**KEY TO SYMBOLS**

Red symbols indicate internal characteristics.  
Green symbols indicate external characteristics.



Sample Image Used

**COLOR**

D E F G H I J Faint Very Light Light

**CLARITY**

|                     |                             |                        |                   |                  |
|---------------------|-----------------------------|------------------------|-------------------|------------------|
| IF                  | VS <sup>1-2</sup>           | VS <sup>1-2</sup>      | SI <sup>1-2</sup> | I <sup>1-3</sup> |
| Internally Flawless | Very Very Slightly Included | Very Slightly Included | Slightly Included | Included         |

