



ELECTRONIC COPY

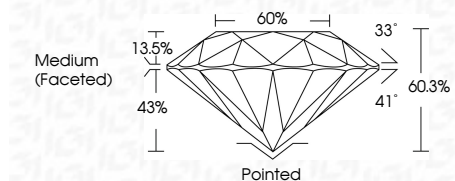
LG657461476
Report verification at igi.org



October 8, 2024
IGI Report Number: LG657461476
Description: LABORATORY GROWN DIAMOND
Shape and Cutting Style: ROUND BRILLIANT
Measurements: 8.12 - 8.16 X 4.91 MM

GRADING RESULTS

Carat Weight: 2.00 CARATS
Color Grade: E
Clarity Grade: VS 1
Cut Grade: IDEAL



ADDITIONAL GRADING INFORMATION

Polish: EXCELLENT
Symmetry: EXCELLENT
Fluorescence: NONE
Inscription(s): IGI LG657461476
Comments: This Laboratory Grown Diamond was created by Chemical Vapor Deposition (CVD) growth process. Type IIa



October 8, 2024
IGI Report No LG657461476
ROUND BRILLIANT
2.00 CARATS E
8.12 - 8.16 X 4.91 MM
Color Grade: E
Clarity Grade: VS 1
Depth: 60.3%
Table: 60%
Medium (Faceted)
Cut: Pointed
Polish: EXCELLENT
Symmetry: EXCELLENT
Fluorescence: NONE
Inscriptions: IGI LG657461476
Comments: This Laboratory Grown Diamond was created by Chemical Vapor Deposition (CVD) growth process. Type IIa

October 8, 2024
IGI Report Number: LG657461476
Description: LABORATORY GROWN DIAMOND
Shape and Cutting Style: ROUND BRILLIANT
Measurements: 8.12 - 8.16 X 4.91 MM

GRADING RESULTS

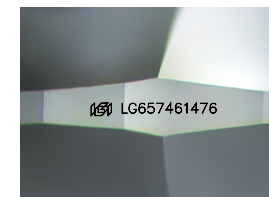
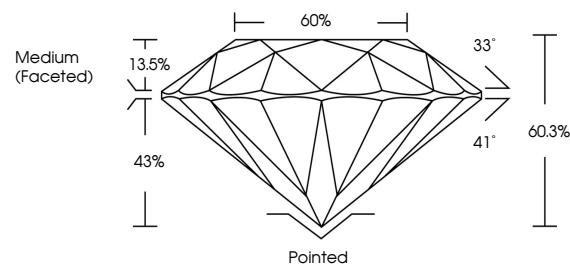
Carat Weight: 2.00 CARATS
Color Grade: E
Clarity Grade: VS 1
Cut Grade: IDEAL

ADDITIONAL GRADING INFORMATION

Polish: EXCELLENT
Symmetry: EXCELLENT
Fluorescence: NONE
Inscription(s): IGI LG657461476

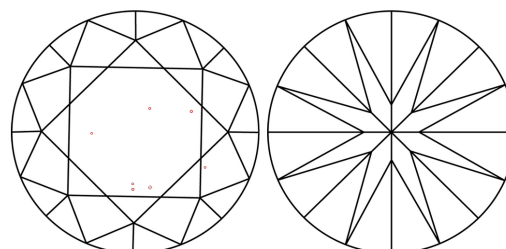
Comments: This Laboratory Grown Diamond was created by Chemical Vapor Deposition (CVD) growth process. Type IIa

PROPORTIONS



Sample Image Used

CLARITY CHARACTERISTICS



KEY TO SYMBOLS

Red symbols indicate internal characteristics.
Green symbols indicate external characteristics.

COLOR

D E F G H I J Faint Very Light Light

CLARITY

IF VS 1-2 VS 1-2 SI 1-2 I 1-3
Internally Flawless Very Very Slightly Included Very Slightly Included Slightly Included Included

