



ELECTRONIC COPY

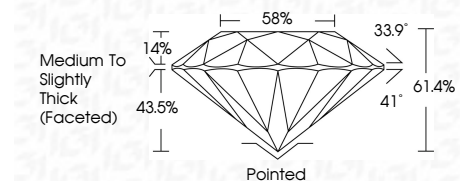
LG657461575
Report verification at igi.org



October 5, 2024
IGI Report Number: LG657461575
Description: LABORATORY GROWN DIAMOND
Shape and Cutting Style: ROUND BRILLIANT
Measurements: 6.56 - 6.60 X 4.04 MM

GRADING RESULTS

Carat Weight: 1.08 CARAT
Color Grade: E
Clarity Grade: VVS 2
Cut Grade: IDEAL

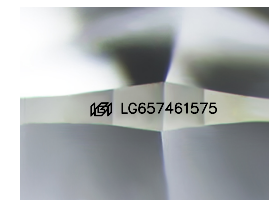


ADDITIONAL GRADING INFORMATION

Polish: EXCELLENT
Symmetry: EXCELLENT
Fluorescence: NONE
Inscription(s): IGI LG657461575
Comments: This Laboratory Grown Diamond was created by Chemical Vapor Deposition (CVD) growth process. Type IIa

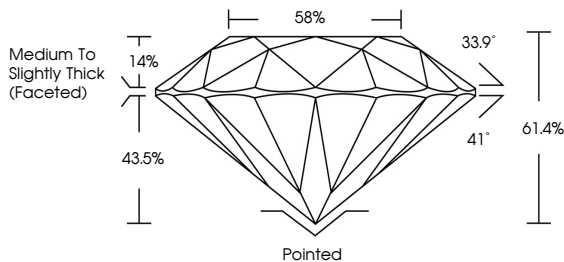


October 5, 2024
IGI Report No LG657461575
ROUND BRILLIANT
6.56 - 6.60 X 4.04 MM
1.08 CARAT
Color Grade: E
Clarity Grade: VVS 2
Cut Grade: IDEAL
Depth: 61.4%
Table: 58%
Medium To Slightly Thick (Faceted)
Girdle: Pointed
Culet: EXCELLENT
Polish: EXCELLENT
Symmetry: EXCELLENT
Fluorescence: NONE
Inscription(s): IGI LG657461575
Comments: This Laboratory Grown Diamond was created by Chemical Vapor Deposition (CVD) growth process. Type IIa

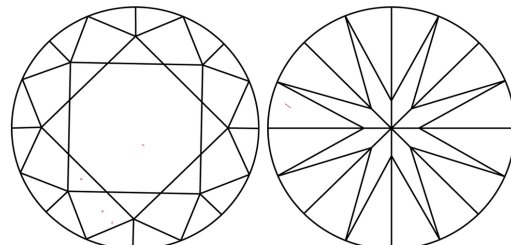


Sample Image Used

PROPORTIONS



CLARITY CHARACTERISTICS



KEY TO SYMBOLS

Red symbols indicate internal characteristics.
Green symbols indicate external characteristics.

COLOR

D E F G H I J Faint Very Light Light

CLARITY

IF VVS 1-2 VS 1-2 SI 1-2 I 1-3
Internally Flawless Very Very Slightly Included Very Slightly Included Slightly Included Included



October 5, 2024
IGI Report Number: LG657461575
Description: LABORATORY GROWN DIAMOND
Shape and Cutting Style: ROUND BRILLIANT
Measurements: 6.56 - 6.60 X 4.04 MM

GRADING RESULTS

Carat Weight: 1.08 CARAT
Color Grade: E
Clarity Grade: VVS 2
Cut Grade: IDEAL

ADDITIONAL GRADING INFORMATION

Polish: EXCELLENT
Symmetry: EXCELLENT
Fluorescence: NONE
Inscription(s): IGI LG657461575

Comments: This Laboratory Grown Diamond was created by Chemical Vapor Deposition (CVD) growth process. Type IIa