

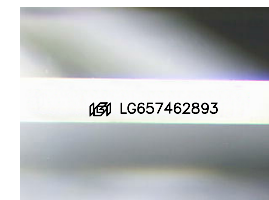


ELECTRONIC COPY

LG657462893
Report verification at igi.org

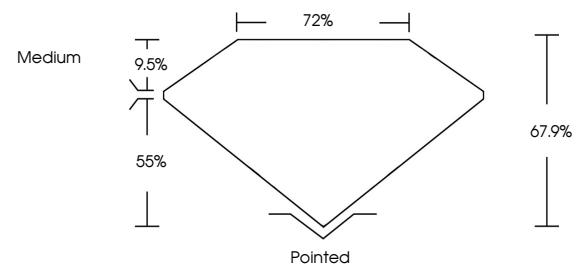


October 11, 2024
IGI Report Number **LG657462893**
Description **LABORATORY GROWN DIAMOND**
Shape and Cutting Style **PRINCESS CUT**
Measurements **6.69 X 6.52 X 4.43 MM**
GRADING RESULTS
Carat Weight **1.66 CARAT**
Color Grade **FANCY INTENSE PINK**
Clarity Grade **VS 1**

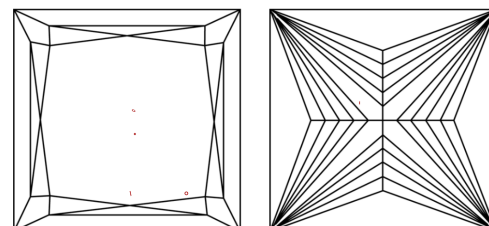


Sample Image Used

PROPORTIONS



CLARITY CHARACTERISTICS



KEY TO SYMBOLS

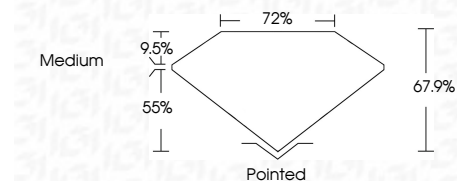
Red symbols indicate internal characteristics.
Green symbols indicate external characteristics.

COLOR

D	E	F	G	H	I	J	Faint	Very Light	Light
---	---	---	---	---	---	---	-------	------------	-------

CLARITY

IF	VS ¹⁻²	VS ¹⁻²	SI ¹⁻²	I ¹⁻³
Internally Flawless	Very Very Slightly Included	Very Slightly Included	Slightly Included	Included



ADDITIONAL GRADING INFORMATION

Polish **EXCELLENT**
Symmetry **EXCELLENT**
Fluorescence **VERY SLIGHT**
Inscription(s) **IGI LG657462893**
Comments: This Laboratory Grown Diamond was created by Chemical Vapor Deposition (CVD) growth process. Indications of post-growth treatment.
Secondary color: Orange



October 11, 2024
IGI Report No. LG657462893
PRINCESS CUT
1.66 CARAT
FANCY INTENSE PINK
VS 1
6.69 X 6.52 X 4.43 MM
67.9%
72%
Medium
Pointed
EXCELLENT
EXCELLENT
VERY SLIGHT
IGI LG657462893
Comments: This Laboratory Grown Diamond was created by Chemical Vapor Deposition (CVD) growth process. Indications of post-growth treatment.
Secondary color: Orange