



ELECTRONIC COPY

LG657462925
Report verification at igi.org



October 12, 2024
IGI Report Number LG657462925
Description LABORATORY GROWN DIAMOND
Shape and Cutting Style CUT CORNERED RECTANGULAR MODIFIED BRILLIANT
Measurements 8.40 X 5.72 X 3.76 MM
GRADING RESULTS
Carat Weight 1.59 CARAT
Color Grade FANCY VIVID BLUE
Clarity Grade VVS 2

LABORATORY GROWN DIAMOND REPORT

October 12, 2024
IGI Report Number LG657462925
Description LABORATORY GROWN DIAMOND
Shape and Cutting Style CUT CORNERED RECTANGULAR MODIFIED BRILLIANT
Measurements 8.40 X 5.72 X 3.76 MM

GRADING RESULTS

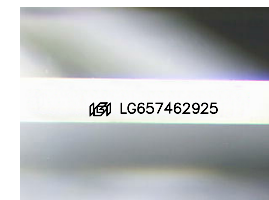
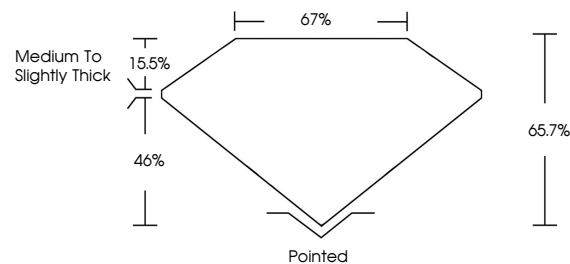
Carat Weight 1.59 CARAT
Color Grade FANCY VIVID BLUE
Clarity Grade VVS 2

ADDITIONAL GRADING INFORMATION

Polish EXCELLENT
Symmetry EXCELLENT
Fluorescence NONE
Inscription(s) LG657462925

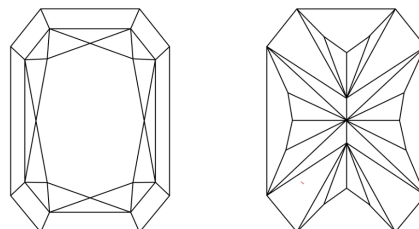
Comments: This Laboratory Grown Diamond was created by Chemical Vapor Deposition (CVD) growth process.
Indications of post-growth treatment.

PROPORTIONS



Sample Image Used

CLARITY CHARACTERISTICS



KEY TO SYMBOLS

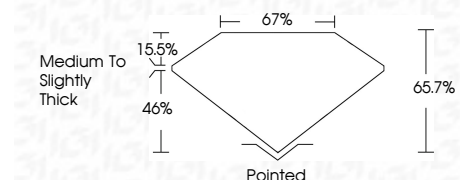
Red symbols indicate internal characteristics.
Green symbols indicate external characteristics.

COLOR

D E F G H I J Faint Very Light Light

CLARITY

IF VVS 1-2 VS 1-2 SI 1-2 I 1-3
Internally Flawless Very Very Slightly Included Very Slightly Included Slightly Included Included



ADDITIONAL GRADING INFORMATION

Polish EXCELLENT
Symmetry EXCELLENT
Fluorescence NONE
Inscription(s) LG657462925
Comments: This Laboratory Grown Diamond was created by Chemical Vapor Deposition (CVD) growth process.
Indications of post-growth treatment.



October 12, 2024
IGI Report No LG657462925
CUT CORNERED RECT. MODIFIED BRILLIANT
8.40 X 5.72 X 3.76 MM
1.59 CARAT
FANCY VIVID BLUE
VVS 2
65.7%
67%
Medium to Slightly Thick
Pointed
EXCELLENT
EXCELLENT
NONE
LG657462925
Comments: This Laboratory Grown Diamond was created by Chemical Vapor Deposition (CVD) growth process.
Indications of post-growth treatment.