



ELECTRONIC COPY

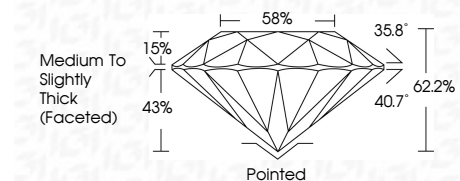
LG657463064 Report verification at igi.org



October 9, 2024 IGI Report Number LG657463064 Description LABORATORY GROWN DIAMOND Shape and Cutting Style ROUND BRILLIANT Measurements 6.96 - 6.98 X 4.33 MM

GRADING RESULTS

Carat Weight 1.31 CARAT Color Grade D Clarity Grade VVS 1 Cut Grade IDEAL



ADDITIONAL GRADING INFORMATION

Polish EXCELLENT Symmetry EXCELLENT Fluorescence NONE Inscription(s) LG657463064 Comments: As Grown - No indication of post-growth treatment. This Laboratory Grown Diamond was created by High Pressure High Temperature (HPHT) growth process. Type II



October 9, 2024 IGI Report No LG657463064 ROUND BRILLIANT 6.96 - 6.98 X 4.33 MM 1.31 CARAT D VVS 1 IDEAL 62.2% 88% Medium To Slightly Thick (Faceted) Pointed EXCELLENT EXCELLENT NONE NONE LG657463064

October 9, 2024 IGI Report Number LG657463064 Description LABORATORY GROWN DIAMOND Shape and Cutting Style ROUND BRILLIANT Measurements 6.96 - 6.98 X 4.33 MM

GRADING RESULTS

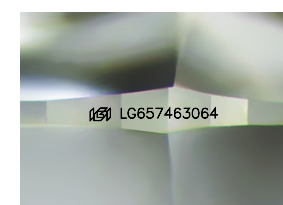
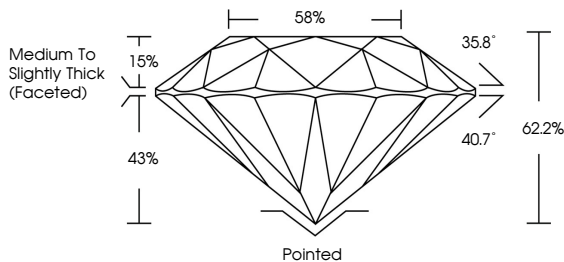
Carat Weight 1.31 CARAT Color Grade D Clarity Grade VVS 1 Cut Grade IDEAL

ADDITIONAL GRADING INFORMATION

Polish EXCELLENT Symmetry EXCELLENT Fluorescence NONE Inscription(s) LG657463064

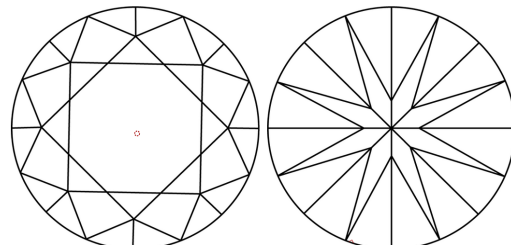
Comments: As Grown - No indication of post-growth treatment. This Laboratory Grown Diamond was created by High Pressure High Temperature (HPHT) growth process. Type II

PROPORTIONS



Sample Image Used

CLARITY CHARACTERISTICS



KEY TO SYMBOLS

Red symbols indicate internal characteristics. Green symbols indicate external characteristics.

COLOR

D E F G H I J Faint Very Light Light

CLARITY

IF VVS 1-2 VS 1-2 SI 1-2 I 1-3 Internally Flawless Very Very Slightly Included Very Slightly Included Slightly Included Included



October 9, 2024 IGI Report No LG657463064 ROUND BRILLIANT 6.96 - 6.98 X 4.33 MM 1.31 CARAT D VVS 1 IDEAL 62.2% 88% Medium To Slightly Thick (Faceted) Pointed EXCELLENT EXCELLENT NONE NONE LG657463064

Comments: As Grown - No indication of post-growth treatment. This Laboratory Grown Diamond was created by High Pressure High Temperature (HPHT) growth process. Type II