



ELECTRONIC COPY

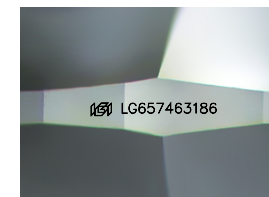
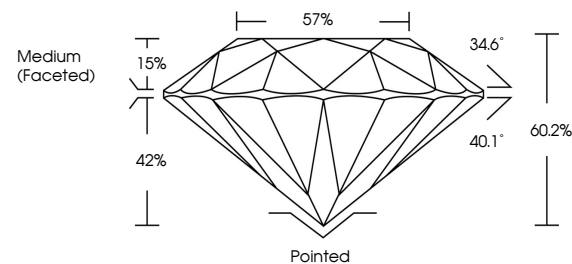
LG657463186
Report verification at igi.org



October 9, 2024
IGI Report Number: LG657463186
Description: LABORATORY GROWN DIAMOND
Shape and Cutting Style: ROUND BRILLIANT
Measurements: 7.00 - 7.04 X 4.23 MM
Grading Results:
Carat Weight: 1.28 CARAT
Color Grade: D
Clarity Grade: INTERNALLY FLAWLESS
Cut Grade: IDEAL

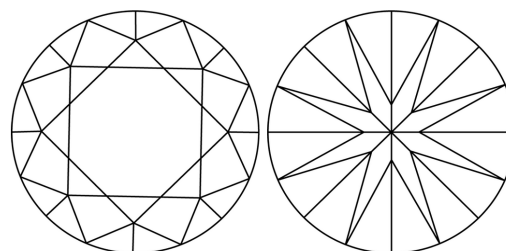
October 9, 2024
IGI Report Number: LG657463186
Description: LABORATORY GROWN DIAMOND
Shape and Cutting Style: ROUND BRILLIANT
Measurements: 7.00 - 7.04 X 4.23 MM

PROPORTIONS



Sample Image Used

CLARITY CHARACTERISTICS



KEY TO SYMBOLS

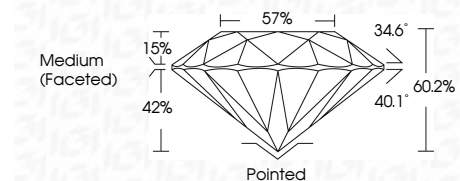
Red symbols indicate internal characteristics.
Green symbols indicate external characteristics.

COLOR

D E F G H I J Faint Very Light Light

CLARITY

IF VS 1-2 VS 1-2 SI 1-2 I 1-3
Internally Flawless Very Very Slightly Included Very Slightly Included Slightly Included Included



ADDITIONAL GRADING INFORMATION

Polish: EXCELLENT
Symmetry: EXCELLENT
Fluorescence: NONE
Inscription(s): LG657463186
Comments: As Grown - No indication of post-growth treatment.
This Laboratory Grown Diamond was created by High Pressure High Temperature (HPHT) growth process.
Type II

Grading Results:
Carat Weight: 1.28 CARAT
Color Grade: D
Clarity Grade: INTERNALLY FLAWLESS
Cut Grade: IDEAL
Additional Grading Information:
Polish: EXCELLENT
Symmetry: EXCELLENT
Fluorescence: NONE
Inscription(s): LG657463186

Comments: As Grown - No indication of post-growth treatment.
This Laboratory Grown Diamond was created by High Pressure High Temperature (HPHT) growth process.
Type II



October 9, 2024
IGI Report No LG657463186
ROUND BRILLIANT
1.28 CARAT
D
Color Grade: D
Clarity Grade: IF
Depth: 60.2%
Table: 57%
Medium (Faceted)
Cut: Pointed
Polish: EXCELLENT
Symmetry: EXCELLENT
Fluorescence: NONE
Inscriptions(s): IGI LG657463186
Comments: As Grown - No indication of post-growth treatment.
This Laboratory Grown Diamond was created by High Pressure High Temperature (HPHT) growth process.
Type II