



ELECTRONIC COPY

LG657463191
Report verification at igi.org



October 9, 2024

IGI Report Number LG657463191

Description LABORATORY GROWN DIAMOND

Shape and Cutting Style ROUND BRILLIANT

Measurements 6.58 - 6.61 X 3.91 MM

GRADING RESULTS

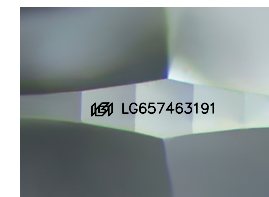
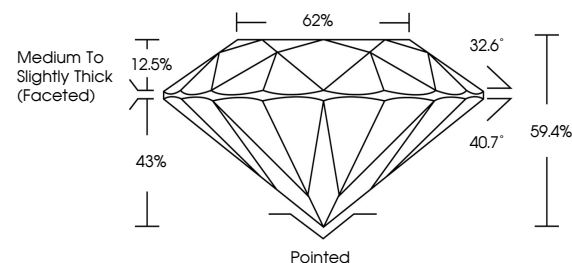
Carat Weight 1.05 CARAT

Color Grade D

Clarity Grade VVS 2

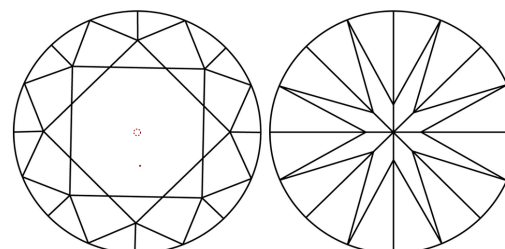
Cut Grade EXCELLENT

PROPORTIONS



Sample Image Used

CLARITY CHARACTERISTICS



KEY TO SYMBOLS

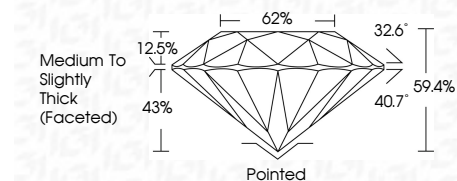
Red symbols indicate internal characteristics. Green symbols indicate external characteristics.

COLOR

D E F G H I J Faint Very Light Light

CLARITY

IF VVS 1-2 VS 1-2 SI 1-2 I 1-3 Internally Flawless Very Very Slightly Included Very Slightly Included Slightly Included Included



ADDITIONAL GRADING INFORMATION

Polish EXCELLENT

Symmetry EXCELLENT

Fluorescence NONE

Inscription(s) IGI LG657463191

Comments: As Grown - No indication of post-growth treatment.

This Laboratory Grown Diamond was created by High Pressure High Temperature (HPHT) growth process.

Type II



IGI



Summary of report details including date, report number, description, measurements, grading results, and additional information.