



ELECTRONIC COPY

LABORATORY GROWN DIAMOND REPORT

October 8, 2024
IGI Report Number LG657463881
Description LABORATORY GROWN DIAMOND
Shape and Cutting Style ROUND BRILLIANT
Measurements 6.53 - 6.56 X 3.95 MM

GRADING RESULTS

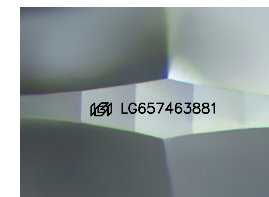
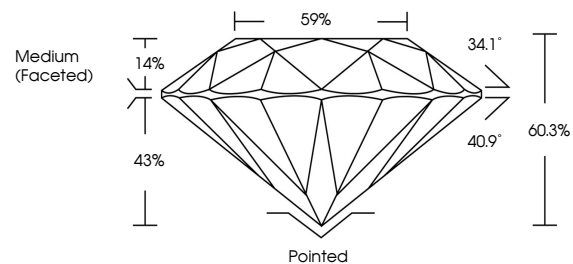
Carat Weight 1.03 CARAT
Color Grade D
Clarity Grade INTERNALLY FLAWLESS
Cut Grade IDEAL

ADDITIONAL GRADING INFORMATION

Polish EXCELLENT
Symmetry EXCELLENT
Fluorescence NONE
Inscription(s) IGI LG657463881

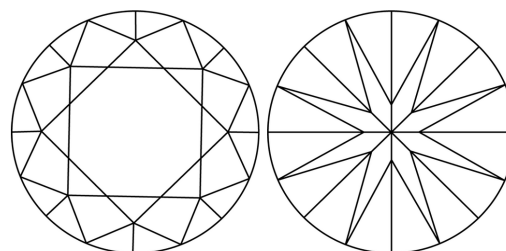
Comments: HEARTS & ARROWS
As Grown - No indication of post-growth treatment.
This Laboratory Grown Diamond was created by High Pressure High Temperature (HPHT) growth process.
Type II

PROPORTIONS



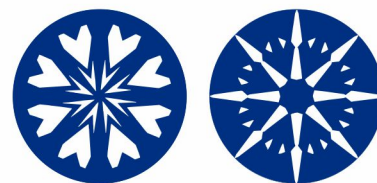
Sample Image Used

CLARITY CHARACTERISTICS



KEY TO SYMBOLS

Red symbols indicate internal characteristics.
Green symbols indicate external characteristics.



COLOR

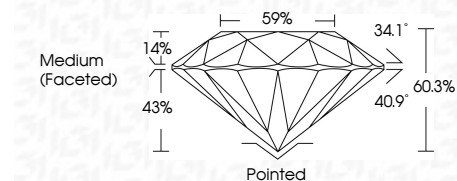
D E F G H I J Faint Very Light Light

CLARITY

IF VS 1-2 VS 1-2 SI 1-2 I 1-3
Internally Flawless Very Very Slightly Included Very Slightly Included Slightly Included Included



October 8, 2024
IGI Report Number LG657463881
Description LABORATORY GROWN DIAMOND
Shape and Cutting Style ROUND BRILLIANT
Measurements 6.53 - 6.56 X 3.95 MM
GRADING RESULTS
Carat Weight 1.03 CARAT
Color Grade D
Clarity Grade INTERNALLY FLAWLESS
Cut Grade IDEAL



ADDITIONAL GRADING INFORMATION

Polish EXCELLENT
Symmetry EXCELLENT
Fluorescence NONE
Inscription(s) IGI LG657463881
Comments: HEARTS & ARROWS
As Grown - No indication of post-growth treatment.
This Laboratory Grown Diamond was created by High Pressure High Temperature (HPHT) growth process.
Type II



Summary table with fields: Date, Report No, Shape, Carat Weight, Color Grade, Clarity Grade, Depth, Table, Girdle, Cutler, Polish, Symmetry, Fluorescence, Inscription(s), Comments.