



**INTERNATIONAL
GEMOLOGICAL
INSTITUTE**

LABORATORY GROWN DIAMOND REPORT

October 8, 2024
 IGI Report Number **LG657465730**
 Description **LABORATORY GROWN DIAMOND**
 Shape and Cutting Style **EMERALD CUT**
 Measurements **5.89 X 4.23 X 2.79 MM**

GRADING RESULTS

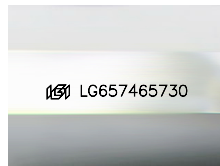
Carat Weight **0.72 CARAT**
 Color Grade **D**
 Clarity Grade **VS 2**

ADDITIONAL GRADING INFORMATION

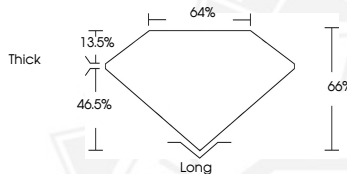
Polish **EXCELLENT**
 Symmetry **EXCELLENT**
 Fluorescence **NONE**
 Inscription(s) **IGI LG657465730**

Comments: This Laboratory Grown Diamond was created by
 Chemical Vapor Deposition (CVD) growth process.
 Type IIa

ELECTRONIC COPY



Sample Image Used



October 8, 2024
 IGI Report Number **LG657465730**
EMERALD CUT
LABORATORY GROWN DIAMOND
5.89 X 4.23 X 2.79 MM
 Carat Weight **0.72 CARAT**
 Color Grade **D**
 Clarity Grade **VS 2**
 Polish **EXCELLENT**
 Symmetry **EXCELLENT**
 Fluorescence **NONE**
 Inscription(s) **IGI LG657465730**

Comments: This Laboratory Grown
 Diamond was created by
 Chemical Vapor Deposition (CVD)
 growth process. Type IIa



October 8, 2024
 IGI Report Number **LG657465730**
EMERALD CUT
LABORATORY GROWN DIAMOND
5.89 X 4.23 X 2.79 MM
 Carat Weight **0.72 CARAT**
 Color Grade **D**
 Clarity Grade **VS 2**
 Polish **EXCELLENT**
 Symmetry **EXCELLENT**
 Fluorescence **NONE**
 Inscription(s) **IGI LG657465730**

Comments: This Laboratory Grown
 Diamond was created by
 Chemical Vapor Deposition (CVD)
 growth process. Type IIa

THIS DOCUMENT WAS PRODUCED WITH THE FOLLOWING SECURITY MEASURES: SPECIAL DOCUMENT PAPER, INK SCREENS, WATERMARK, BACKGROUND DESIGN, HOLOGRAM AND OTHER SECURITY FEATURES NOT LISTED AND DO EXCEED DOCUMENT SECURITY INDUSTRY GUIDELINES.

For terms & conditions and to verify this report, please visit www.igi.org