



**INTERNATIONAL  
GEMOLOGICAL  
INSTITUTE**

**LABORATORY GROWN DIAMOND REPORT**

October 11, 2024  
 IGI Report Number **LG657466050**  
 Description **LABORATORY GROWN DIAMOND**  
 Shape and Cutting Style **EMERALD CUT**  
 Measurements **5.48 X 3.56 X 2.42 MM**

**GRADING RESULTS**

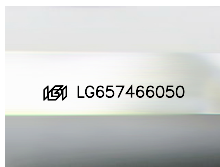
Carat Weight **0.47 CARAT**  
 Color Grade **FANCY INTENSE YELLOW**  
 Clarity Grade **VS 1**

**ADDITIONAL GRADING INFORMATION**

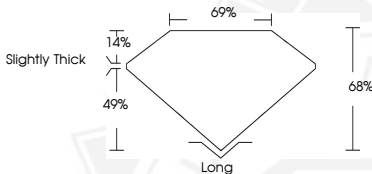
Polish **EXCELLENT**  
 Symmetry **EXCELLENT**  
 Fluorescence **VERY SLIGHT**  
 Inscription(s) **IGI LG657466050**

Comments: This Laboratory Grown Diamond was created by Chemical Vapor Deposition (CVD) growth process. Indications of post-growth treatment.

**ELECTRONIC COPY**



Sample Image Used



October 11, 2024  
 IGI Report Number **LG657466050**  
**EMERALD CUT**  
**LABORATORY GROWN DIAMOND**  
**5.48 X 3.56 X 2.42 MM**  
 Carat Weight **0.47 CARAT**  
 Color Grade **FANCY INTENSE YELLOW**  
 Clarity Grade **VS 1**  
 Polish **EXCELLENT**  
 Symmetry **EXCELLENT**  
 Fluorescence **VERY SLIGHT**  
 Inscription(s) **IGI LG657466050**

Comments: This Laboratory Grown Diamond was created by Chemical Vapor Deposition (CVD) growth process. Indications of post-growth treatment.



October 11, 2024  
 IGI Report Number **LG657466050**  
**EMERALD CUT**  
**LABORATORY GROWN DIAMOND**  
**5.48 X 3.56 X 2.42 MM**  
 Carat Weight **0.47 CARAT**  
 Color Grade **FANCY INTENSE YELLOW**  
 Clarity Grade **VS 1**  
 Polish **EXCELLENT**  
 Symmetry **EXCELLENT**  
 Fluorescence **VERY SLIGHT**  
 Inscription(s) **IGI LG657466050**

Comments: This Laboratory Grown Diamond was created by Chemical Vapor Deposition (CVD) growth process. Indications of post-growth treatment.

THIS DOCUMENT WAS PRODUCED WITH THE FOLLOWING SECURITY MEASURES: SPECIAL DOCUMENT PAPER, INK SCREENS, WATERMARK, BACKGROUND DESIGN, HOLOGRAM AND OTHER SECURITY FEATURES NOT LISTED AND DO EXCEED DOCUMENT SECURITY INDUSTRY GUIDELINES.

For terms & conditions and to verify this report, please visit [www.igi.org](http://www.igi.org)