



ELECTRONIC COPY

LG657466282
Report verification at igi.org



October 9, 2024

IGI Report Number **LG657466282**

Description **LABORATORY GROWN DIAMOND**

Shape and Cutting Style **EMERALD CUT**

Measurements **7.19 X 4.77 X 3.21 MM**

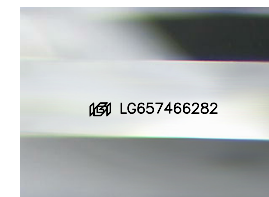
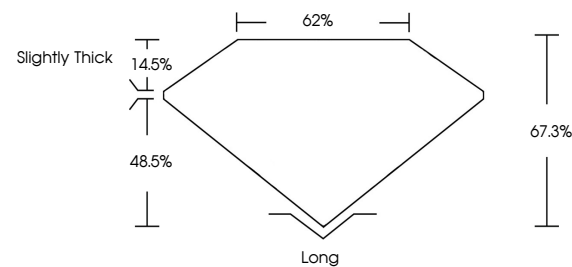
GRADING RESULTS

Carat Weight **1.12 CARAT**

Color Grade **F**

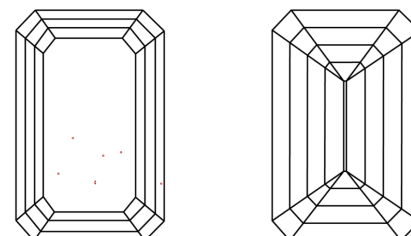
Clarity Grade **VS 1**

PROPORTIONS



Sample Image Used

CLARITY CHARACTERISTICS



KEY TO SYMBOLS

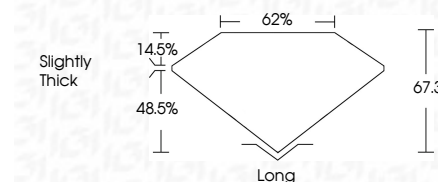
Red symbols indicate internal characteristics.
Green symbols indicate external characteristics.

COLOR

D E F G H I J Faint Very Light Light

CLARITY

IF	VS ¹⁻²	VS ¹⁻²	SI ¹⁻²	I ¹⁻³
Internally Flawless	Very Very Slightly Included	Very Slightly Included	Slightly Included	Included



ADDITIONAL GRADING INFORMATION

Polish **EXCELLENT**

Symmetry **EXCELLENT**

Fluorescence **NONE**

Inscription(s) **IGI LG657466282**

Comments: This Laboratory Grown Diamond was created by Chemical Vapor Deposition (CVD) growth process. Type IIa



IGI

October 9, 2024
IGI Report No. LG657466282
EMERALD CUT

7.19 X 4.77 X 3.21 MM

Carat Weight **1.12 CARAT**

Color Grade **F**

Clarity Grade **VS 1**

Depth **67.3%**

Table **62%**

Graints **Slightly Thick**

Culet **Long**

Polish **EXCELLENT**

Symmetry **EXCELLENT**

Fluorescence **NONE**

Inscription(s) **IGI LG657466282**

Comments: This Laboratory Grown Diamond was created by Chemical Vapor Deposition (CVD) growth process. Type IIa