



ELECTRONIC COPY

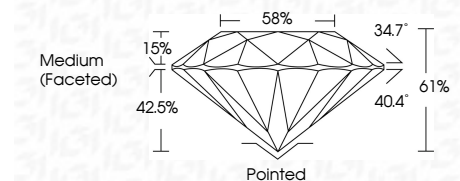
LG657466307 Report verification at igi.org



October 10, 2024 IGI Report Number LG657466307 Description LABORATORY GROWN DIAMOND Shape and Cutting Style ROUND BRILLIANT Measurements 8.12 - 8.18 X 4.98 MM

GRADING RESULTS

Carat Weight 2.03 CARATS Color Grade F Clarity Grade VS 1 Cut Grade IDEAL



ADDITIONAL GRADING INFORMATION

Polish EXCELLENT Symmetry EXCELLENT Fluorescence NONE Inscription(s) IGI LG657466307 Comments: This Laboratory Grown Diamond was created by Chemical Vapor Deposition (CVD) growth process. Type IIa



October 10, 2024 IGI Report No LG657466307 ROUND BRILLIANT 8.12 - 8.18 X 4.98 MM 2.03 CARATS F VS 1 IDEAL 61% 58% Medium (Faceted) Pointed EXCELLENT EXCELLENT NONE NONE IGI LG657466307 Comments: This Laboratory Grown Diamond was created by Chemical Vapor Deposition (CVD) growth process. Type IIa

October 10, 2024 IGI Report Number LG657466307 Description LABORATORY GROWN DIAMOND Shape and Cutting Style ROUND BRILLIANT Measurements 8.12 - 8.18 X 4.98 MM

GRADING RESULTS

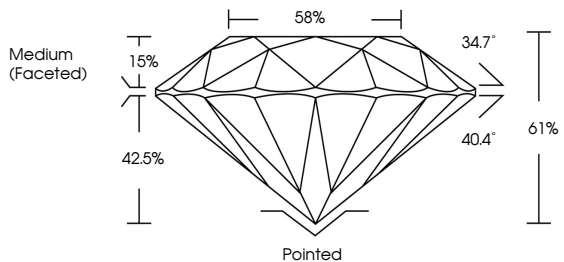
Carat Weight 2.03 CARATS Color Grade F Clarity Grade VS 1 Cut Grade IDEAL

ADDITIONAL GRADING INFORMATION

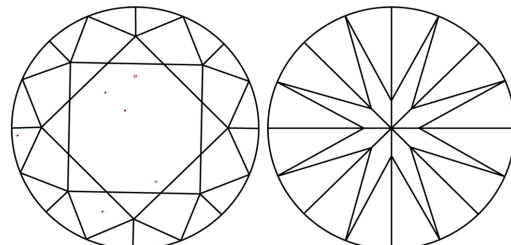
Polish EXCELLENT Symmetry EXCELLENT Fluorescence NONE Inscription(s) IGI LG657466307

Comments: This Laboratory Grown Diamond was created by Chemical Vapor Deposition (CVD) growth process. Type IIa

PROPORTIONS

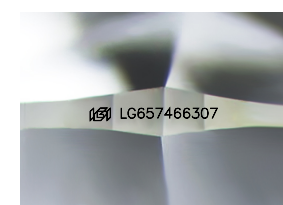


CLARITY CHARACTERISTICS



KEY TO SYMBOLS

Red symbols indicate internal characteristics. Green symbols indicate external characteristics.



Sample Image Used

COLOR

D E F G H I J Faint Very Light Light

CLARITY

IF VS 1-2 VS 1-2 SI 1-2 I 1-3 Internally Flawless Very Very Slightly Included Very Slightly Included Slightly Included Included

