



ELECTRONIC COPY

LG657466712
Report verification at igi.org



October 9, 2024

IGI Report Number LG657466712

Description LABORATORY GROWN DIAMOND

Shape and Cutting Style CUT CORNERED RECTANGULAR MODIFIED BRILLIANT

Measurements 7.04 X 4.74 X 3.26 MM

GRADING RESULTS

Carat Weight 1.00 CARAT

Color Grade E

Clarity Grade VS 1

LABORATORY GROWN DIAMOND REPORT

October 9, 2024

IGI Report Number LG657466712

Description LABORATORY GROWN DIAMOND

Shape and Cutting Style CUT CORNERED RECTANGULAR MODIFIED BRILLIANT

Measurements 7.04 X 4.74 X 3.26 MM

GRADING RESULTS

Carat Weight 1.00 CARAT

Color Grade E

Clarity Grade VS 1

ADDITIONAL GRADING INFORMATION

Polish EXCELLENT

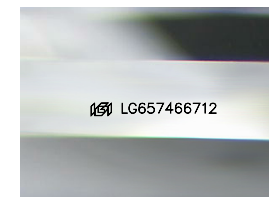
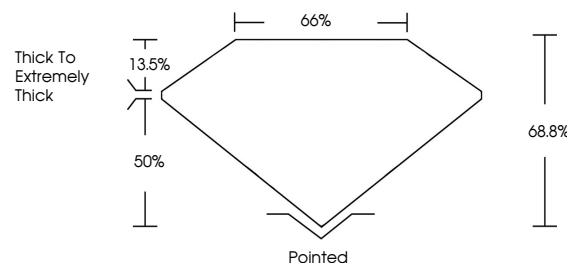
Symmetry EXCELLENT

Fluorescence NONE

Inscription(s) LG657466712

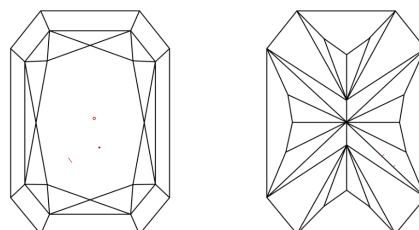
Comments: This Laboratory Grown Diamond was created by Chemical Vapor Deposition (CVD) growth process. Type IIa

PROPORTIONS



Sample Image Used

CLARITY CHARACTERISTICS



KEY TO SYMBOLS

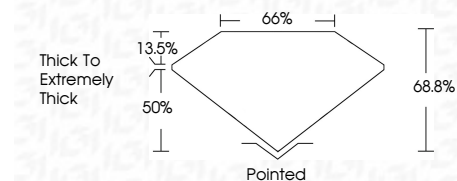
Red symbols indicate internal characteristics. Green symbols indicate external characteristics.

COLOR

D E F G H I J Faint Very Light Light

CLARITY

IF VS 1-2 VS 1-2 SI 1-2 I 1-3 Internally Flawless Very Very Slightly Included Very Slightly Included Slightly Included Included



ADDITIONAL GRADING INFORMATION

Polish EXCELLENT

Symmetry EXCELLENT

Fluorescence NONE

Inscription(s) LG657466712

Comments: This Laboratory Grown Diamond was created by Chemical Vapor Deposition (CVD) growth process. Type IIa



IGI



October 9, 2024
IGI Report No LG657466712
CUT CORNERED RECT. MODIFIED BRILLIANT
7.04 X 4.74 X 3.26 MM
1.00 CARAT
E
VS 1
68.8%
50%
Thick To Extremely Thick
Pointed
EXCELLENT
EXCELLENT
NONE
IGI LG657466712
Comments: This Laboratory Grown Diamond was created by Chemical Vapor Deposition (CVD) growth process. Type IIa