



ELECTRONIC COPY

LG657466877
Report verification at igi.org

LABORATORY GROWN DIAMOND REPORT

October 11, 2024
IGI Report Number **LG657466877**
Description **LABORATORY GROWN DIAMOND**
Shape and Cutting Style **SQUARE EMERALD CUT**
Measurements **6.97 X 6.68 X 4.37 MM**

GRADING RESULTS

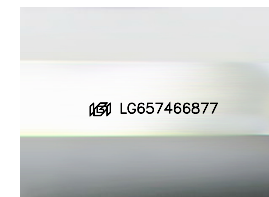
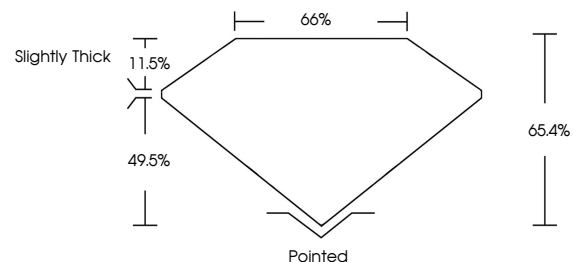
Carat Weight **1.95 CARAT**
Color Grade **FANCY INTENSE PINK**
Clarity Grade **VVS 2**

ADDITIONAL GRADING INFORMATION

Polish **EXCELLENT**
Symmetry **EXCELLENT**
Fluorescence **SLIGHT**
Inscription(s) **IGI LG657466877**

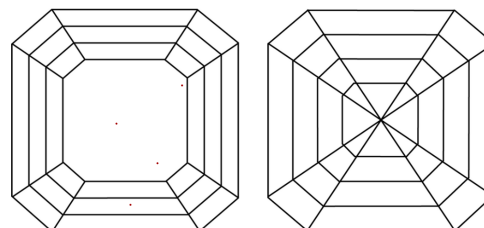
Comments: This Laboratory Grown Diamond was created by Chemical Vapor Deposition (CVD) growth process. Indications of post-growth treatment.

PROPORTIONS



Sample Image Used

CLARITY CHARACTERISTICS



KEY TO SYMBOLS

Red symbols indicate internal characteristics.
Green symbols indicate external characteristics.

COLOR

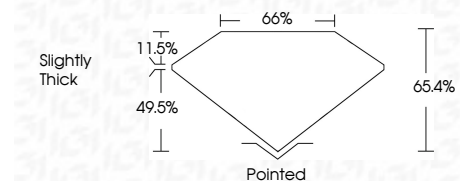
D E F G H I J Faint Very Light Light

CLARITY

IF	VS ¹⁻²	VS ¹⁻²	SI ¹⁻²	I ¹⁻³
Internally Flawless	Very Very Slightly Included	Very Slightly Included	Slightly Included	Included



October 11, 2024
IGI Report Number **LG657466877**
Description **LABORATORY GROWN DIAMOND**
Shape and Cutting Style **SQUARE EMERALD CUT**
Measurements **6.97 X 6.68 X 4.37 MM**
GRADING RESULTS
Carat Weight **1.95 CARAT**
Color Grade **FANCY INTENSE PINK**
Clarity Grade **VVS 2**



ADDITIONAL GRADING INFORMATION

Polish **EXCELLENT**
Symmetry **EXCELLENT**
Fluorescence **SLIGHT**
Inscription(s) **IGI LG657466877**
Comments: This Laboratory Grown Diamond was created by Chemical Vapor Deposition (CVD) growth process. Indications of post-growth treatment.



October 11, 2024	IGI Report No LG657466877	1.95 CARAT	Pointed
SQUARE EMERALD CUT	FANCY INTENSE PINK	VVS 2	EXCELLENT
6.97 X 6.68 X 4.37 MM	65.4%	65%	SLIGHT
Color Grade	Clarity Grade	Depth	Inscription(s)
		Table	IGI LG657466877
		Graile	
		Culet	
		Polish	
		Symmetry	
		Fluorescence	
		Inscription(s)	

Comments: This Laboratory Grown Diamond was created by Chemical Vapor Deposition (CVD) growth process. Indications of post-growth treatment.