



ELECTRONIC COPY

LABORATORY GROWN DIAMOND REPORT

October 11, 2024  
IGI Report Number **LG657466890**  
Description **LABORATORY GROWN DIAMOND**  
Shape and Cutting Style **CUT CORNERED RECTANGULAR MODIFIED BRILLIANT**  
Measurements **9.04 X 6.16 X 4.15 MM**

GRADING RESULTS

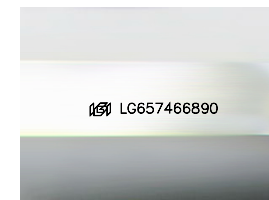
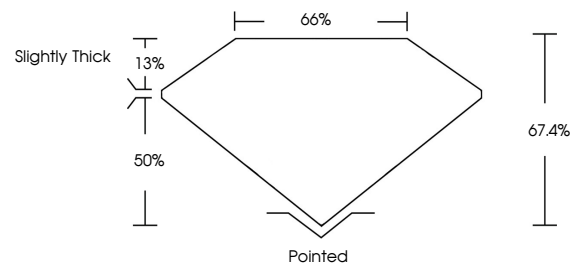
Carat Weight **2.03 CARATS**  
Color Grade **FANCY VIVID PINK**  
Clarity Grade **VS 2**

ADDITIONAL GRADING INFORMATION

Polish **EXCELLENT**  
Symmetry **EXCELLENT**  
Fluorescence **SLIGHT**  
Inscription(s) **IGI LG657466890**

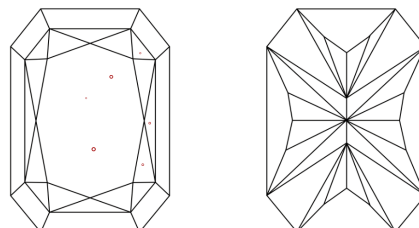
Comments: This Laboratory Grown Diamond was created by Chemical Vapor Deposition (CVD) growth process. Indications of post-growth treatment.

PROPORTIONS



Sample Image Used

CLARITY CHARACTERISTICS



KEY TO SYMBOLS

Red symbols indicate internal characteristics.  
Green symbols indicate external characteristics.

COLOR

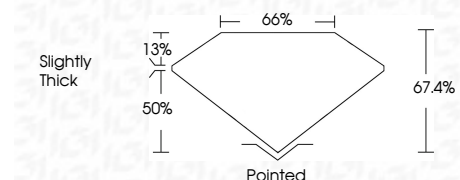
D E F G H I J Faint Very Light Light

CLARITY

IF VS 1-2 VS 1-2 SI 1-2 I 1-3  
Internally Flawless Very Very Slightly Included Very Slightly Included Slightly Included Included



October 11, 2024  
IGI Report Number **LG657466890**  
Description **LABORATORY GROWN DIAMOND**  
Shape and Cutting Style **CUT CORNERED RECTANGULAR MODIFIED BRILLIANT**  
Measurements **9.04 X 6.16 X 4.15 MM**  
GRADING RESULTS  
Carat Weight **2.03 CARATS**  
Color Grade **FANCY VIVID PINK**  
Clarity Grade **VS 2**



ADDITIONAL GRADING INFORMATION

Polish **EXCELLENT**  
Symmetry **EXCELLENT**  
Fluorescence **SLIGHT**  
Inscription(s) **IGI LG657466890**  
Comments: This Laboratory Grown Diamond was created by Chemical Vapor Deposition (CVD) growth process. Indications of post-growth treatment.



October 11, 2024  
IGI Report No **LG657466890**  
CUT **CORNERED RECT. MODIFIED BRILLIANT**  
9.04 X 6.16 X 4.15 MM  
2.03 CARATS  
FANCY VIVID PINK  
VS 2  
67.4%  
50%  
Slightly Thick  
Pointed  
EXCELLENT  
EXCELLENT  
SLIGHT  
IGI LG657466890  
Comments: This Laboratory Grown Diamond was created by Chemical Vapor Deposition (CVD) growth process. Indications of post-growth treatment.