



ELECTRONIC COPY

LG657466915
Report verification at igi.org



October 11, 2024
IGI Report Number **LG657466915**
Description **LABORATORY GROWN DIAMOND**
Shape and Cutting Style **EMERALD CUT**
Measurements **8.26 X 5.93 X 4.13 MM**
GRADING RESULTS
Carat Weight **2.01 CARATS**
Color Grade **FANCY INTENSE PINK**
Clarity Grade **VS 1**

LABORATORY GROWN DIAMOND REPORT

October 11, 2024
IGI Report Number **LG657466915**
Description **LABORATORY GROWN DIAMOND**
Shape and Cutting Style **EMERALD CUT**
Measurements **8.26 X 5.93 X 4.13 MM**

GRADING RESULTS

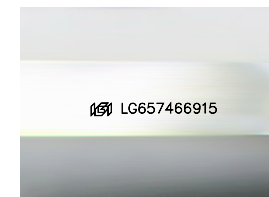
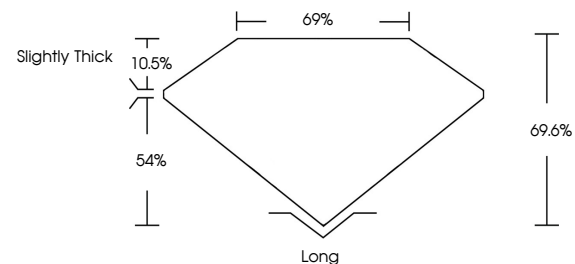
Carat Weight **2.01 CARATS**
Color Grade **FANCY INTENSE PINK**
Clarity Grade **VS 1**

ADDITIONAL GRADING INFORMATION

Polish **EXCELLENT**
Symmetry **EXCELLENT**
Fluorescence **SLIGHT**
Inscription(s) **LG657466915**

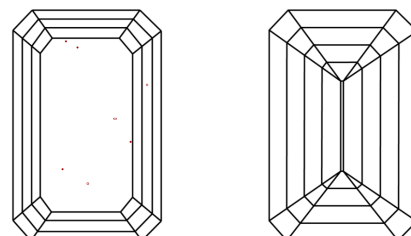
Comments: This Laboratory Grown Diamond was created by Chemical Vapor Deposition (CVD) growth process.
Indications of post-growth treatment.

PROPORTIONS



Sample Image Used

CLARITY CHARACTERISTICS



KEY TO SYMBOLS

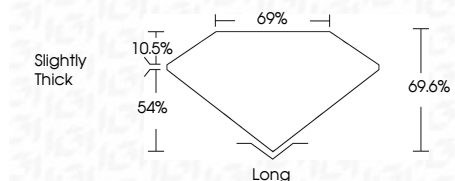
Red symbols indicate internal characteristics.
Green symbols indicate external characteristics.

COLOR

D E F G H I J Faint Very Light Light

CLARITY

IF	VS ¹⁻²	VS ¹⁻²	SI ¹⁻²	I ¹⁻³
Internally Flawless	Very Very Slightly Included	Very Slightly Included	Slightly Included	Included



ADDITIONAL GRADING INFORMATION

Polish **EXCELLENT**
Symmetry **EXCELLENT**
Fluorescence **SLIGHT**
Inscription(s) **LG657466915**
Comments: This Laboratory Grown Diamond was created by Chemical Vapor Deposition (CVD) growth process.
Indications of post-growth treatment.



October 11, 2024
IGI Report No **LG657466915**
EMERALD CUT
2.01 CARATS
8.26 X 5.93 X 4.13 MM
Carat Weight
Color Grade **FANCY INTENSE PINK**
Clarity Grade **VS 1**
Depth **69.6%**
Table **69%**
Girdle **Slightly Thick**
Culet **Long**
Polish **EXCELLENT**
Symmetry **EXCELLENT**
Fluorescence **SLIGHT**
Inscription(s) **LG657466915**
Comments: This Laboratory Grown Diamond was created by Chemical Vapor Deposition (CVD) growth process.
Indications of post-growth treatment.