



ELECTRONIC COPY

LG657466945
Report verification at igi.org



October 11, 2024
IGI Report Number **LG657466945**
Description **LABORATORY GROWN DIAMOND**
Shape and Cutting Style **EMERALD CUT**
Measurements **6.93 X 4.84 X 3.14 MM**
GRADING RESULTS
Carat Weight **1.01 CARAT**
Color Grade **FANCY GREENISH BLUE**
Clarity Grade **VS 2**

LABORATORY GROWN DIAMOND REPORT

October 11, 2024
IGI Report Number **LG657466945**
Description **LABORATORY GROWN DIAMOND**
Shape and Cutting Style **EMERALD CUT**
Measurements **6.93 X 4.84 X 3.14 MM**

GRADING RESULTS

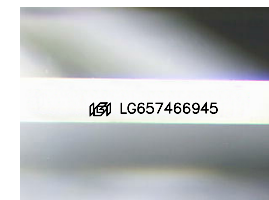
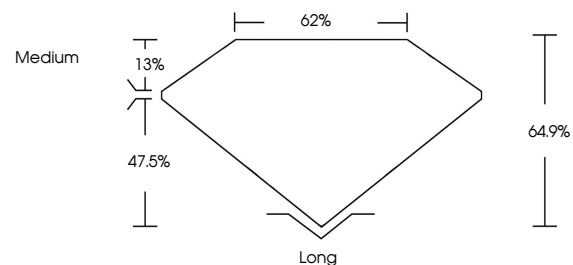
Carat Weight **1.01 CARAT**
Color Grade **FANCY GREENISH BLUE**
Clarity Grade **VS 2**

ADDITIONAL GRADING INFORMATION

Polish **EXCELLENT**
Symmetry **EXCELLENT**
Fluorescence **NONE**
Inscription(s) **IGI LG657466945**

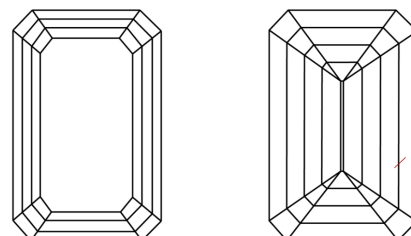
Comments: This Laboratory Grown Diamond was created by Chemical Vapor Deposition (CVD) growth process.
Indications of post-growth treatment.

PROPORTIONS



Sample Image Used

CLARITY CHARACTERISTICS



KEY TO SYMBOLS

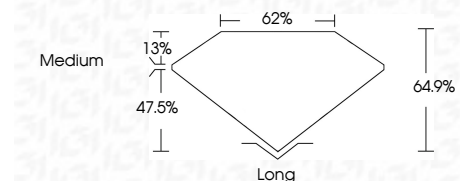
Red symbols indicate internal characteristics.
Green symbols indicate external characteristics.

COLOR

D E F G H I J Faint Very Light Light

CLARITY

IF	VS ¹⁻²	VS ¹⁻²	SI ¹⁻²	I ¹⁻³
Internally Flawless	Very Very Slightly Included	Very Slightly Included	Slightly Included	Included



ADDITIONAL GRADING INFORMATION

Polish **EXCELLENT**
Symmetry **EXCELLENT**
Fluorescence **NONE**
Inscription(s) **IGI LG657466945**
Comments: This Laboratory Grown Diamond was created by Chemical Vapor Deposition (CVD) growth process.
Indications of post-growth treatment.



October 11, 2024
IGI Report No. **LG657466945**
EMERALD CUT
1.01 CARAT
Carat Weight
Color Grade **FANCY GREENISH BLUE**
Clarity Grade **VS 2**
Depth **47.5%**
Table **13%**
Girdle **Medium**
Culet **Long**
Polish **EXCELLENT**
Symmetry **EXCELLENT**
Fluorescence **NONE**
Inscription(s) **IGI LG657466945**
Comments: This Laboratory Grown Diamond was created by Chemical Vapor Deposition (CVD) growth process.
Indications of post-growth treatment.