



ELECTRONIC COPY

LG657467125
Report verification at igi.org



October 12, 2024
IGI Report Number LG657467125
Description LABORATORY GROWN DIAMOND
Shape and Cutting Style ROUND BRILLIANT
Measurements 7.35 - 7.41 X 4.52 MM
GRADING RESULTS
Carat Weight 1.52 CARAT
Color Grade FANCY INTENSE PINK
Clarity Grade VS 1
Cut Grade EXCELLENT

October 12, 2024
IGI Report Number LG657467125
Description LABORATORY GROWN DIAMOND
Shape and Cutting Style ROUND BRILLIANT
Measurements 7.35 - 7.41 X 4.52 MM

GRADING RESULTS

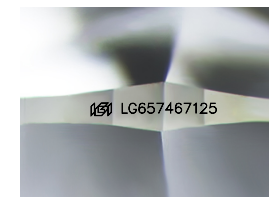
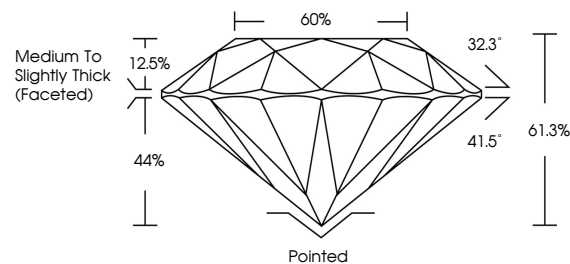
Carat Weight 1.52 CARAT
Color Grade FANCY INTENSE PINK
Clarity Grade VS 1
Cut Grade EXCELLENT

ADDITIONAL GRADING INFORMATION

Polish EXCELLENT
Symmetry EXCELLENT
Fluorescence SLIGHT
Inscription(s) IGI LG657467125

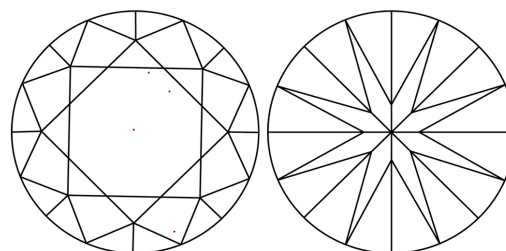
Comments: This Laboratory Grown Diamond was created by Chemical Vapor Deposition (CVD) growth process.
Indications of post-growth treatment.

PROPORTIONS



Sample Image Used

CLARITY CHARACTERISTICS



KEY TO SYMBOLS

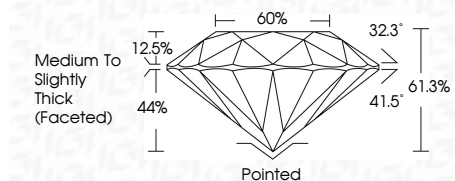
Red symbols indicate internal characteristics.
Green symbols indicate external characteristics.

COLOR

D E F G H I J Faint Very Light Light

CLARITY

Table with columns for clarity grades: IF, VS 1-2, VS 1-2, SI 1-2, I 1-3 and their corresponding descriptions: Internally Flawless, Very Very Slightly Included, Very Slightly Included, Slightly Included, Included.



ADDITIONAL GRADING INFORMATION

Polish EXCELLENT
Symmetry EXCELLENT
Fluorescence SLIGHT
Inscription(s) IGI LG657467125
Comments: This Laboratory Grown Diamond was created by Chemical Vapor Deposition (CVD) growth process.
Indications of post-growth treatment.



Summary of report details including date, report number, description, measurements, grading results, and additional information.