



**ELECTRONIC COPY**

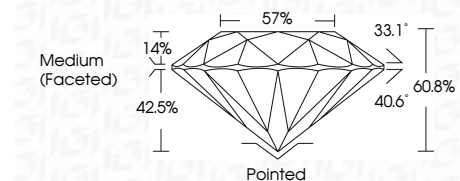
LG657468415  
Report verification at [igi.org](http://igi.org)



October 14, 2024  
IGI Report Number **LG657468415**  
Description **LABORATORY GROWN DIAMOND**  
Shape and Cutting Style **ROUND BRILLIANT**  
Measurements **7.20 - 7.23 X 4.39 MM**

**GRADING RESULTS**

Carat Weight **1.42 CARAT**  
Color Grade **FANCY VIVID PINK**  
Clarity Grade **VVS 2**  
Cut Grade **IDEAL**



**ADDITIONAL GRADING INFORMATION**

Polish **EXCELLENT**  
Symmetry **EXCELLENT**  
Fluorescence **SLIGHT**  
Inscription(s) **IGI LG657468415**

Comments: This Laboratory Grown Diamond was created by Chemical Vapor Deposition (CVD) growth process. Indications of post-growth treatment.



|                  |                           |              |                  |               |           |       |       |                  |         |           |           |              |                 |
|------------------|---------------------------|--------------|------------------|---------------|-----------|-------|-------|------------------|---------|-----------|-----------|--------------|-----------------|
| October 14, 2024 | IGI Report No LG657468415 | 1.42 CARAT   | FANCY VIVID PINK | VVS 2         | IDEAL     | 60.8% | 57%   | Medium (Faceted) | Pointed | EXCELLENT | EXCELLENT | SLIGHT       | IGI LG657468415 |
| ROUND BRILLIANT  | 7.20 - 7.23 X 4.39 MM     | Carat Weight | Color Grade      | Clarity Grade | Cut Grade | Depth | Table | Grade            | Culet   | Polish    | Symmetry  | Fluorescence | Inscription(s)  |

Comments: This Laboratory Grown Diamond was created by Chemical Vapor Deposition (CVD) growth process. Indications of post-growth treatment.

October 14, 2024  
IGI Report Number **LG657468415**  
Description **LABORATORY GROWN DIAMOND**  
Shape and Cutting Style **ROUND BRILLIANT**  
Measurements **7.20 - 7.23 X 4.39 MM**

**GRADING RESULTS**

Carat Weight **1.42 CARAT**  
Color Grade **FANCY VIVID PINK**  
Clarity Grade **VVS 2**  
Cut Grade **IDEAL**

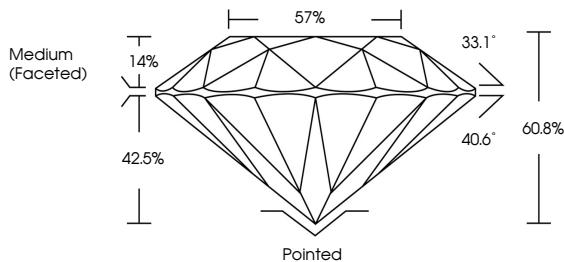
**ADDITIONAL GRADING INFORMATION**

Polish **EXCELLENT**  
Symmetry **EXCELLENT**  
Fluorescence **SLIGHT**

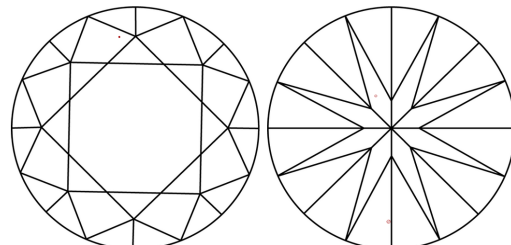
Inscription(s) **IGI LG657468415**

Comments: This Laboratory Grown Diamond was created by Chemical Vapor Deposition (CVD) growth process. Indications of post-growth treatment.

**PROPORTIONS**

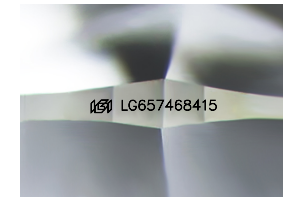


**CLARITY CHARACTERISTICS**



**KEY TO SYMBOLS**

Red symbols indicate internal characteristics.  
Green symbols indicate external characteristics.



Sample Image Used

**COLOR**

D E F G H I J Faint Very Light Light

**CLARITY**

|                     |                             |                        |                   |                  |
|---------------------|-----------------------------|------------------------|-------------------|------------------|
| IF                  | VS <sup>1-2</sup>           | VS <sup>1-2</sup>      | SI <sup>1-2</sup> | I <sup>1-3</sup> |
| Internally Flawless | Very Very Slightly Included | Very Slightly Included | Slightly Included | Included         |



THIS DOCUMENT WAS PRODUCED WITH THE FOLLOWING SECURITY MEASURES: SPECIAL DOCUMENT PAPER, INK SCREENS, WATERMARK BACKGROUND DESIGNS, HOLOGRAM AND OTHER SECURITY FEATURES NOT LISTED AND DO EXCEED DOCUMENT SECURITY INDUSTRY GUIDELINES.