



ELECTRONIC COPY

LG657468423
Report verification at igi.org



October 14, 2024
IGI Report Number LG657468423
Description LABORATORY GROWN DIAMOND
Shape and Cutting Style CUT CORNERED RECTANGULAR MODIFIED BRILLIANT
Measurements 7.29 X 4.97 X 3.43 MM
GRADING RESULTS
Carat Weight 1.17 CARAT
Color Grade FANCY VIVID YELLOW
Clarity Grade VVS 2

LABORATORY GROWN DIAMOND REPORT

October 14, 2024
IGI Report Number LG657468423
Description LABORATORY GROWN DIAMOND
Shape and Cutting Style CUT CORNERED RECTANGULAR MODIFIED BRILLIANT
Measurements 7.29 X 4.97 X 3.43 MM

GRADING RESULTS

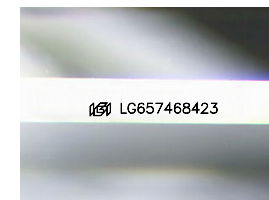
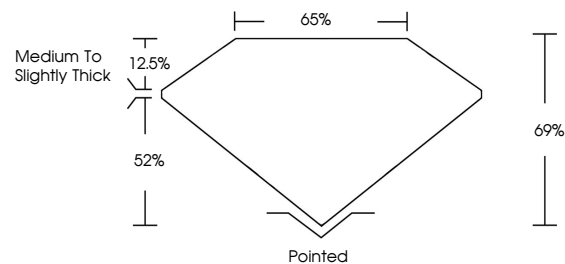
Carat Weight 1.17 CARAT
Color Grade FANCY VIVID YELLOW
Clarity Grade VVS 2

ADDITIONAL GRADING INFORMATION

Polish EXCELLENT
Symmetry EXCELLENT
Fluorescence NONE
Inscription(s) LG657468423

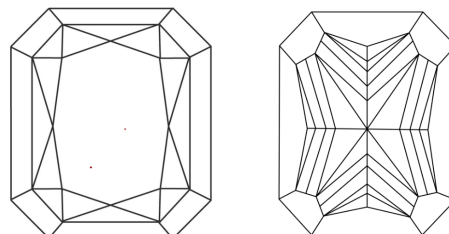
Comments: This Laboratory Grown Diamond was created by Chemical Vapor Deposition (CVD) growth process.

PROPORTIONS



Sample Image Used

CLARITY CHARACTERISTICS



KEY TO SYMBOLS

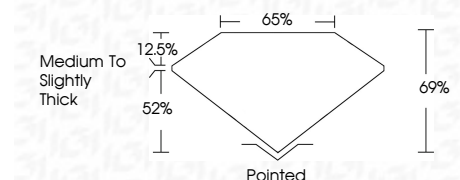
Red symbols indicate internal characteristics.
Green symbols indicate external characteristics.

COLOR

D E F G H I J Faint Very Light Light

CLARITY

IF WVS 1-2 VS 1-2 SI 1-2 I 1-3
Internally Flawless Very Very Slightly Included Very Slightly Included Slightly Included Included



ADDITIONAL GRADING INFORMATION

Polish EXCELLENT
Symmetry EXCELLENT
Fluorescence NONE
Inscription(s) LG657468423
Comments: This Laboratory Grown Diamond was created by Chemical Vapor Deposition (CVD) growth process.



October 14, 2024
IGI Report No LG657468423
CUT CORNERED RECT. MODIFIED BRILLIANT
7.29 X 4.97 X 3.43 MM
1.17 CARAT
FANCY VIVID YELLOW
VVS 2
69%
65%
Medium to Slightly Thick
Pointed
EXCELLENT
EXCELLENT
NONE
None
Inscription(s) LG657468423
Comments: This Laboratory Grown Diamond was created by Chemical Vapor Deposition (CVD) growth process.