



**ELECTRONIC COPY**

LG658470781  
Report verification at [igi.org](http://igi.org)



October 10, 2024  
IGI Report Number **LG658470781**  
Description **LABORATORY GROWN DIAMOND**  
Shape and Cutting Style **ROUND BRILLIANT**  
Measurements **9.36 - 9.40 X 5.71 MM**  
**GRADING RESULTS**  
Carat Weight **3.08 CARATS**  
Color Grade **E**  
Clarity Grade **VS 1**  
Cut Grade **IDEAL**

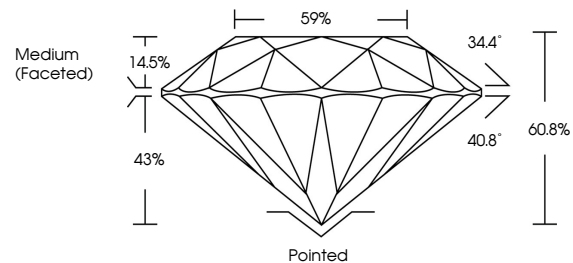
October 10, 2024  
IGI Report Number **LG658470781**  
Description **LABORATORY GROWN DIAMOND**  
Shape and Cutting Style **ROUND BRILLIANT**  
Measurements **9.36 - 9.40 X 5.71 MM**  
**GRADING RESULTS**  
Carat Weight **3.08 CARATS**  
Color Grade **E**  
Clarity Grade **VS 1**  
Cut Grade **IDEAL**

**ADDITIONAL GRADING INFORMATION**

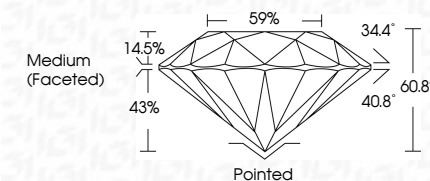
Polish **EXCELLENT**  
Symmetry **EXCELLENT**  
Fluorescence **NONE**  
Inscription(s) **IGI LG658470781**

Comments: This Laboratory Grown Diamond was created by Chemical Vapor Deposition (CVD) growth process.  
Type IIa

**PROPORTIONS**



Sample Image Used



**COLOR**

D E F G H I J Faint Very Light Light

**CLARITY**

IF	VS <sup>1-2</sup>	VS <sup>1-2</sup>	SI <sup>1-2</sup>	I <sup>1-3</sup>
Internally Flawless	Very Very Slightly Included	Very Slightly Included	Slightly Included	Included

**ADDITIONAL GRADING INFORMATION**

Polish **EXCELLENT**  
Symmetry **EXCELLENT**  
Fluorescence **NONE**  
Inscription(s) **IGI LG658470781**  
Comments: This Laboratory Grown Diamond was created by Chemical Vapor Deposition (CVD) growth process.  
Type IIa



October 10, 2024  
IGI Report No **LG658470781**  
**ROUND BRILLIANT**  
**9.36 - 9.40 X 5.71 MM**  
Carat Weight **3.08 CARATS**  
Color Grade **E**  
Clarity Grade **VS 1**  
Cut Grade **IDEAL**  
Depth **60.8%**  
Table **59%**  
Girdle **Medium (Faceted)**  
Culet **Pointed**  
Polish **EXCELLENT**  
Symmetry **EXCELLENT**  
Fluorescence **NONE**  
Inscriptions(s) **IGI LG658470781**  
Comments: This Laboratory Grown Diamond was created by Chemical Vapor Deposition (CVD) growth process.  
Type IIa