



ELECTRONIC COPY

LG658471225
Report verification at igi.org



October 8, 2024

IGI Report Number LG658471225

Description LABORATORY GROWN DIAMOND

Shape and Cutting Style CUT CORNERED RECTANGULAR MODIFIED BRILLIANT

Measurements 7.70 X 4.97 X 3.13 MM

GRADING RESULTS

Carat Weight 1.06 CARAT

Color Grade D

Clarity Grade VS 1

LABORATORY GROWN DIAMOND REPORT

October 8, 2024

IGI Report Number LG658471225

Description LABORATORY GROWN DIAMOND

Shape and Cutting Style CUT CORNERED RECTANGULAR MODIFIED BRILLIANT

Measurements 7.70 X 4.97 X 3.13 MM

GRADING RESULTS

Carat Weight 1.06 CARAT

Color Grade D

Clarity Grade VS 1

ADDITIONAL GRADING INFORMATION

Polish EXCELLENT

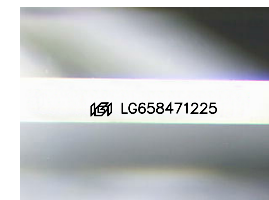
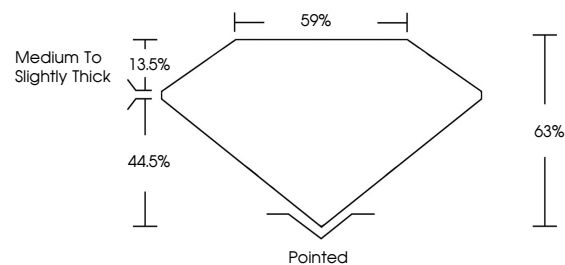
Symmetry EXCELLENT

Fluorescence NONE

Inscription(s) LG658471225

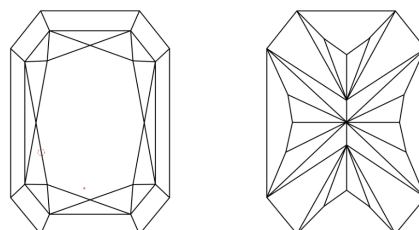
Comments: This Laboratory Grown Diamond was created by Chemical Vapor Deposition (CVD) growth process. Type IIa

PROPORTIONS



Sample Image Used

CLARITY CHARACTERISTICS



KEY TO SYMBOLS

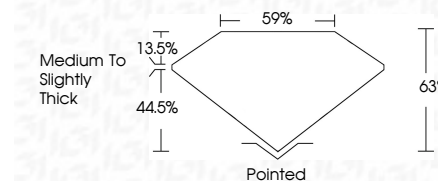
Red symbols indicate internal characteristics. Green symbols indicate external characteristics.

COLOR

D E F G H I J Faint Very Light Light

CLARITY

IF VS 1-2 VS 1-2 SI 1-2 I 1-3 Internally Flawless Very Very Slightly Included Very Slightly Included Slightly Included Included



ADDITIONAL GRADING INFORMATION

Polish EXCELLENT

Symmetry EXCELLENT

Fluorescence NONE

Inscription(s) LG658471225

Comments: This Laboratory Grown Diamond was created by Chemical Vapor Deposition (CVD) growth process. Type IIa



IGI



October 8, 2024
IGI Report No LG658471225
CUT CORNERED RECT. MODIFIED BRILLIANT
7.70 X 4.97 X 3.13 MM
1.06 CARAT
D
VS 1
63%
59%
Medium to Slightly Thick
Pointed
EXCELLENT
EXCELLENT
NONE
LG658471225
Comments: This Laboratory Grown Diamond was created by Chemical Vapor Deposition (CVD) growth process. Type IIa