



ELECTRONIC COPY

LG658471273
Report verification at igi.org



October 11, 2024

IGI Report Number **LG658471273**

Description **LABORATORY GROWN DIAMOND**

Shape and Cutting Style **EMERALD CUT**

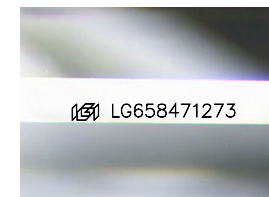
Measurements **7.34 X 4.71 X 2.95 MM**

GRADING RESULTS

Carat Weight **1.05 CARAT**

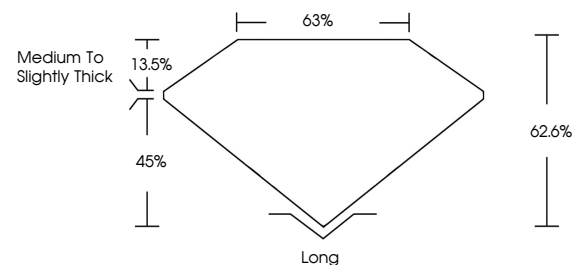
Color Grade **K**

Clarity Grade **VVS 2**

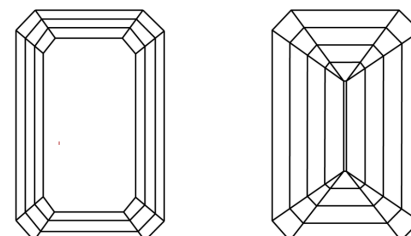


Sample Image Used

PROPORTIONS



CLARITY CHARACTERISTICS



KEY TO SYMBOLS

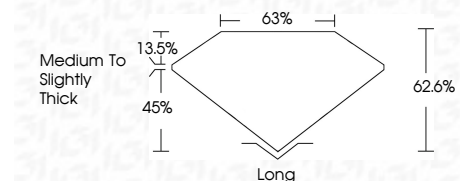
Red symbols indicate internal characteristics.
Green symbols indicate external characteristics.

COLOR

D E F G H I J Faint Very Light Light

CLARITY

IF	VS ¹⁻²	VS ¹⁻²	SI ¹⁻²	I ¹⁻³
Internally Flawless	Very Very Slightly Included	Very Slightly Included	Slightly Included	Included



ADDITIONAL GRADING INFORMATION

Polish **EXCELLENT**

Symmetry **EXCELLENT**

Fluorescence **NONE**

Inscription(s) **IGI LG658471273**

Comments: This Laboratory Grown Diamond was created by Chemical Vapor Deposition (CVD) growth process.
Type IIa



IGI



October 11, 2024
IGI Report No. LG658471273
EMERALD CUT

1.05 CARAT
K

7.34 X 4.71 X 2.95 MM

Carat Weight
Color Grade
Clarity Grade
Table
Girdle
Culet
Polish
Symmetry
Fluorescence
Inscription(s)

1.05 CARAT
VVS 2
62.6%
63%
Medium to Slightly Thick
Long
EXCELLENT
EXCELLENT
NONE
IGI LG658471273

Comments: This Laboratory Grown Diamond was created by Chemical Vapor Deposition (CVD) growth process.
Type IIa