



ELECTRONIC COPY

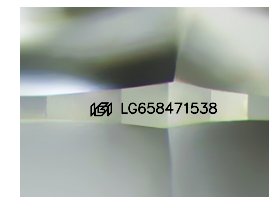
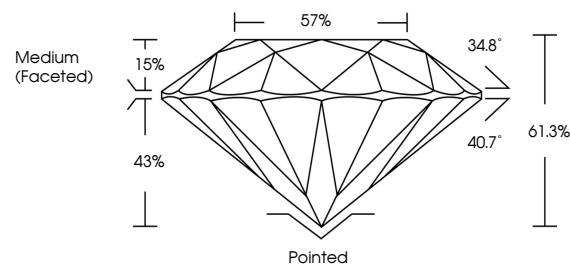
LG658471538 Report verification at igi.org



October 10, 2024 IGI Report Number LG658471538 Description LABORATORY GROWN DIAMOND Shape and Cutting Style ROUND BRILLIANT Measurements 7.42 - 7.46 X 4.56 MM GRADING RESULTS Carat Weight 1.55 CARAT Color Grade E Clarity Grade VVS 2 Cut Grade IDEAL

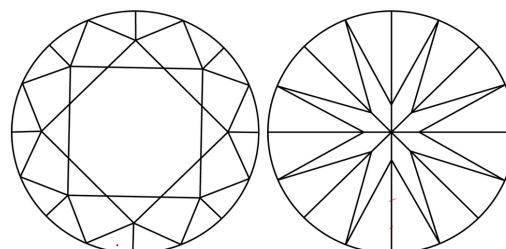
October 10, 2024 IGI Report Number LG658471538 Description LABORATORY GROWN DIAMOND Shape and Cutting Style ROUND BRILLIANT Measurements 7.42 - 7.46 X 4.56 MM

PROPORTIONS



Sample Image Used

CLARITY CHARACTERISTICS



KEY TO SYMBOLS

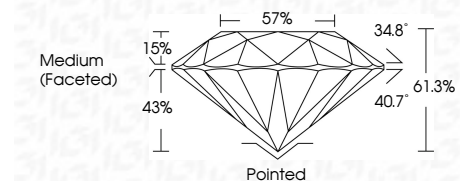
Red symbols indicate internal characteristics. Green symbols indicate external characteristics.

COLOR

D E F G H I J Faint Very Light Light

CLARITY

IF VVS 1-2 VS 1-2 SI 1-2 I 1-3 Internally Flawless Very Very Slightly Included Very Slightly Included Slightly Included Included



ADDITIONAL GRADING INFORMATION

Polish EXCELLENT Symmetry EXCELLENT Fluorescence NONE Inscription(s) IGI LG658471538 Comments: As Grown - No indication of post-growth treatment. This Laboratory Grown Diamond was created by High Pressure High Temperature (HPHT) growth process. Type II

ADDITIONAL GRADING INFORMATION

Polish EXCELLENT Symmetry EXCELLENT Fluorescence NONE Inscription(s) IGI LG658471538

Comments: As Grown - No indication of post-growth treatment. This Laboratory Grown Diamond was created by High Pressure High Temperature (HPHT) growth process. Type II



October 10, 2024 IGI Report No LG658471538 ROUND BRILLIANT 7.42 - 7.46 X 4.56 MM 1.55 CARAT E VVS 2 IDEAL 61.3% 57% Medium (Faceted) Pointed EXCELLENT EXCELLENT NONE NONE IGI LG658471538 Comments: As Grown - No indication of post-growth treatment. This Laboratory Grown Diamond was created by High Pressure High Temperature (HPHT) growth process. Type II