



ELECTRONIC COPY

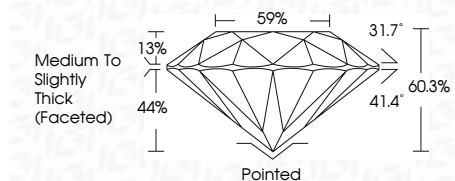
LG658473015 Report verification at igi.org



October 11, 2024 IGI Report Number LG658473015 Description LABORATORY GROWN DIAMOND Shape and Cutting Style ROUND BRILLIANT Measurements 7.74 - 7.77 X 4.68 MM

GRADING RESULTS

Carat Weight 1.70 CARAT Color Grade E Clarity Grade VS 2 Cut Grade EXCELLENT



ADDITIONAL GRADING INFORMATION

Polish EXCELLENT Symmetry EXCELLENT Fluorescence NONE Inscription(s) LG658473015 Comments: This Laboratory Grown Diamond was created by Chemical Vapor Deposition (CVD) growth process. Type IIa



October 11, 2024 IGI Report No LG658473015 ROUND BRILLIANT 7.74 - 7.77 X 4.68 MM 1.70 CARAT E VS 2 EXCELLENT 60.3% 59% Medium To Slightly Thick (Faceted) Pointed EXCELLENT EXCELLENT NONE LG658473015

October 11, 2024 IGI Report Number LG658473015 Description LABORATORY GROWN DIAMOND Shape and Cutting Style ROUND BRILLIANT Measurements 7.74 - 7.77 X 4.68 MM

GRADING RESULTS

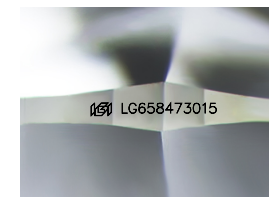
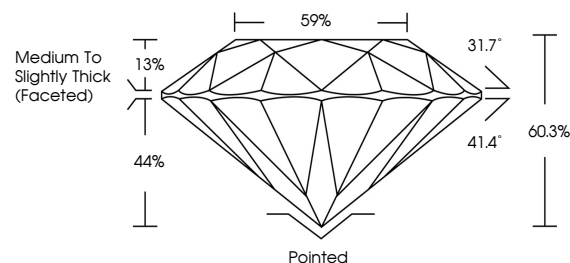
Carat Weight 1.70 CARAT Color Grade E Clarity Grade VS 2 Cut Grade EXCELLENT

ADDITIONAL GRADING INFORMATION

Polish EXCELLENT Symmetry EXCELLENT Fluorescence NONE Inscription(s) LG658473015

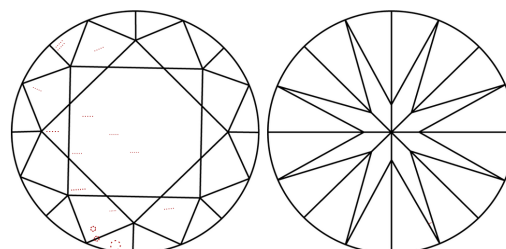
Comments: This Laboratory Grown Diamond was created by Chemical Vapor Deposition (CVD) growth process. Type IIa

PROPORTIONS



Sample Image Used

CLARITY CHARACTERISTICS



KEY TO SYMBOLS

Red symbols indicate internal characteristics. Green symbols indicate external characteristics.

COLOR

D E F G H I J Faint Very Light Light

CLARITY

IF VS 1-2 VS 1-2 SI 1-2 I 1-3 Internally Flawless Very Very Slightly Included Very Slightly Included Slightly Included Included



Comments: This Laboratory Grown Diamond was created by Chemical Vapor Deposition (CVD) growth process. Type IIa