



**ELECTRONIC COPY**

LG658475541  
Report verification at igi.org



October 9, 2024

IGI Report Number **LG658475541**

Description **LABORATORY GROWN DIAMOND**

Shape and Cutting Style **ROUND BRILLIANT**

Measurements **7.14 - 7.19 X 4.41 MM**

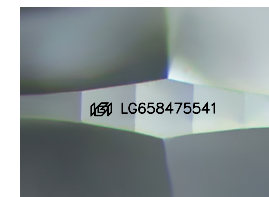
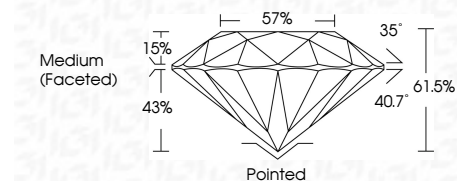
**GRADING RESULTS**

Carat Weight **1.40 CARAT**

Color Grade **E**

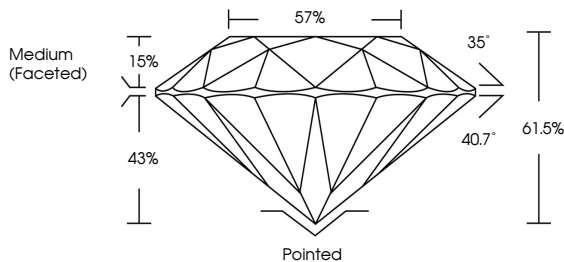
Clarity Grade **VS 1**

Cut Grade **IDEAL**

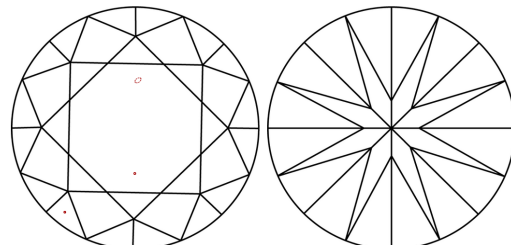


Sample Image Used

**PROPORTIONS**



**CLARITY CHARACTERISTICS**



**KEY TO SYMBOLS**

Red symbols indicate internal characteristics.  
Green symbols indicate external characteristics.

**COLOR**

D	E	F	G	H	I	J	Faint	Very Light	Light
---	---	---	---	---	---	---	-------	------------	-------

**CLARITY**

IF	VS <sup>1-2</sup>	VS <sup>1-2</sup>	SI <sup>1-2</sup>	I <sup>1-3</sup>
Internally Flawless	Very Very Slightly Included	Very Slightly Included	Slightly Included	Included

**ADDITIONAL GRADING INFORMATION**

Polish **EXCELLENT**

Symmetry **EXCELLENT**

Fluorescence **NONE**

Inscription(s) **IGI LG658475541**

Comments: This Laboratory Grown Diamond was created by Chemical Vapor Deposition (CVD) growth process. Type IIa



October 9, 2024  
IGI Report No LG658475541  
**ROUND BRILLIANT**

**7.14 - 7.19 X 4.41 MM**

Carat Weight **1.40 CARAT**  
Color Grade **E**  
Clarity Grade **VS 1**  
Depth **61.5%**  
Table **57%**  
Girdle **Medium (Faceted)**

Culet **Pointed**  
Polish **EXCELLENT**  
Symmetry **EXCELLENT**  
Fluorescence **NONE**  
Inscription(s) **IGI LG658475541**

Comments: This Laboratory Grown Diamond was created by Chemical Vapor Deposition (CVD) growth process. Type IIa