



ELECTRONIC COPY

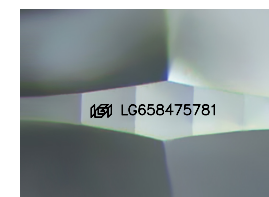
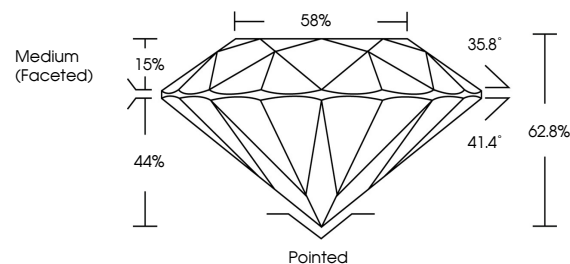
LG658475781
Report verification at igi.org



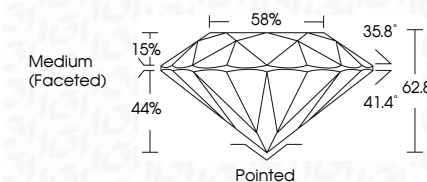
October 10, 2024
IGI Report Number LG658475781
Description LABORATORY GROWN DIAMOND
Shape and Cutting Style ROUND BRILLIANT
Measurements 7.38 - 7.41 X 4.64 MM
GRADING RESULTS
Carat Weight 1.57 CARAT
Color Grade D
Clarity Grade VS 1
Cut Grade EXCELLENT

October 10, 2024
IGI Report Number LG658475781
Description LABORATORY GROWN DIAMOND
Shape and Cutting Style ROUND BRILLIANT
Measurements 7.38 - 7.41 X 4.64 MM
GRADING RESULTS
Carat Weight 1.57 CARAT
Color Grade D
Clarity Grade VS 1
Cut Grade EXCELLENT

PROPORTIONS



Sample Image Used



ADDITIONAL GRADING INFORMATION

Polish EXCELLENT
Symmetry EXCELLENT
Fluorescence NONE
Inscription(s) IGI LG658475781

Comments: This Laboratory Grown Diamond was created by Chemical Vapor Deposition (CVD) growth process. Type IIa

ADDITIONAL GRADING INFORMATION

Polish EXCELLENT
Symmetry EXCELLENT
Fluorescence NONE
Inscription(s) IGI LG658475781
Comments: This Laboratory Grown Diamond was created by Chemical Vapor Deposition (CVD) growth process. Type IIa

COLOR

D E F G H I J Faint Very Light Light

CLARITY

IF VS 1-2 VS 1-2 SI 1-2 I 1-3
Internally Flawless Very Very Slightly Included Very Slightly Included Slightly Included Included



IGI

October 10, 2024
IGI Report No LG658475781
ROUND BRILLIANT
7.38 - 7.41 X 4.64 MM
1.57 CARAT
D
EXCELLENT
VS 1
62.8%
88%
Medium (Faceted)
Pointed
EXCELLENT
EXCELLENT
NONE
IGI LG658475781
Comments: This Laboratory Grown Diamond was created by Chemical Vapor Deposition (CVD) growth process. Type IIa