



**ELECTRONIC COPY**

**LABORATORY GROWN DIAMOND REPORT**

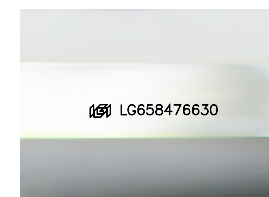
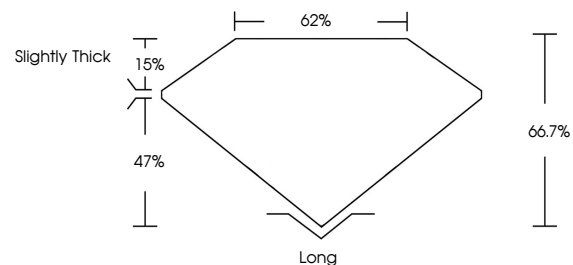
October 8, 2024  
 IGI Report Number **LG658476630**  
 Description **LABORATORY GROWN DIAMOND**  
 Shape and Cutting Style **EMERALD CUT**  
 Measurements **7.63 X 5.23 X 3.49 MM**  
**GRADING RESULTS**  
 Carat Weight **1.38 CARAT**  
 Color Grade **D**  
 Clarity Grade **VVS 1**

**ADDITIONAL GRADING INFORMATION**

Polish **EXCELLENT**  
 Symmetry **EXCELLENT**  
 Fluorescence **NONE**  
 Inscription(s) **IGI LG658476630**

Comments: This Laboratory Grown Diamond was created by Chemical Vapor Deposition (CVD) growth process.  
 Type IIa

**PROPORTIONS**



Sample Image Used

**COLOR**

D	E	F	G	H	I	J	Faint	Very Light	Light
---	---	---	---	---	---	---	-------	------------	-------

**CLARITY**

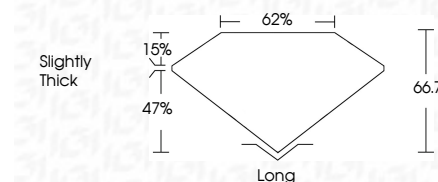
IF	VS <sup>1-2</sup>	VS <sup>1-2</sup>	SI <sup>1-2</sup>	I <sup>1-3</sup>
Internally Flawless	Very Very Slightly Included	Very Slightly Included	Slightly Included	Included



October 8, 2024  
 IGI Report Number **LG658476630**  
 Description **LABORATORY GROWN DIAMOND**  
 Shape and Cutting Style **EMERALD CUT**  
 Measurements **7.63 X 5.23 X 3.49 MM**  
**GRADING RESULTS**  
 Carat Weight **1.38 CARAT**  
 Color Grade **D**  
 Clarity Grade **VVS 1**

**ADDITIONAL GRADING INFORMATION**

Polish **EXCELLENT**  
 Symmetry **EXCELLENT**  
 Fluorescence **NONE**  
 Inscription(s) **IGI LG658476630**  
 Comments: This Laboratory Grown Diamond was created by Chemical Vapor Deposition (CVD) growth process.  
 Type IIa



**IGI**



October 8, 2024  
 IGI Report No LG658476630  
**EMERALD CUT**  
 7.63 X 5.23 X 3.49 MM  
 Carat Weight **1.38 CARAT**  
 Color Grade **D**  
 Clarity Grade **VVS 1**  
 Table **66.7%**  
 Depth **47%**  
 Girdle **Slightly Thick**  
 Length **62%**  
 Width **66.7%**  
 Culet **None**  
 Polish **EXCELLENT**  
 Symmetry **EXCELLENT**  
 Fluorescence **NONE**  
 Inscription(s) **IGI LG658476630**

Comments: This Laboratory Grown Diamond was created by Chemical Vapor Deposition (CVD) growth process.  
 Type IIa