



ELECTRONIC COPY

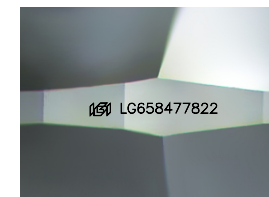
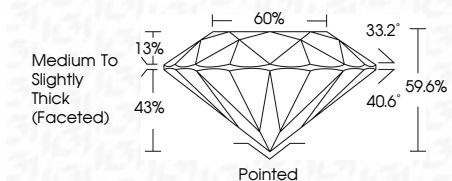
LG658477822 Report verification at igi.org



October 8, 2024 IGI Report Number LG658477822 Description LABORATORY GROWN DIAMOND Shape and Cutting Style ROUND BRILLIANT Measurements 6.87 - 6.91 X 4.11 MM

GRADING RESULTS

Carat Weight 1.20 CARAT Color Grade E Clarity Grade VVS 2 Cut Grade IDEAL



Sample Image Used

ADDITIONAL GRADING INFORMATION

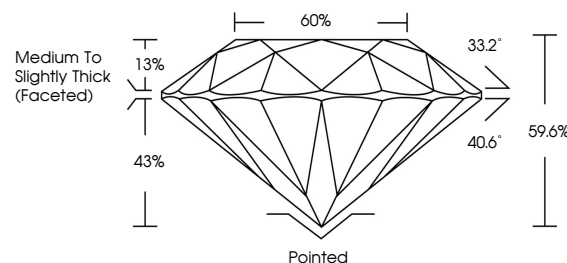
Polish EXCELLENT Symmetry EXCELLENT Fluorescence NONE Inscription(s) LG658477822 Comments: As Grown - No indication of post-growth treatment. This Laboratory Grown Diamond was created by High Pressure High Temperature (HPHT) growth process. Type II



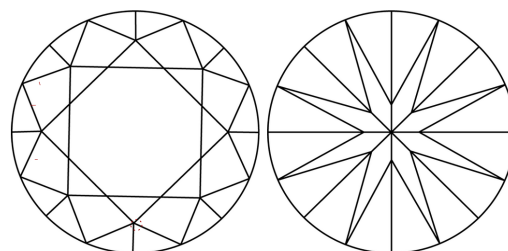
October 8, 2024 IGI Report No LG658477822 ROUND BRILLIANT 6.87 - 6.91 X 4.11 MM 1.20 CARAT E VVS 2 IDEAL 6.87 59.6% 60% Medium To Slightly Thick (Faceted) Pointed EXCELLENT EXCELLENT NONE LG658477822

Comments: As Grown - No indication of post-growth treatment. This Laboratory Grown Diamond was created by High Pressure High Temperature (HPHT) growth process. Type II

PROPORTIONS



CLARITY CHARACTERISTICS



KEY TO SYMBOLS

Red symbols indicate internal characteristics. Green symbols indicate external characteristics.

COLOR

D E F G H I J Faint Very Light Light

CLARITY

IF VVS 1-2 VS 1-2 SI 1-2 I 1-3 Internally Flawless Very Very Slightly Included Very Slightly Included Slightly Included Included

