



ELECTRONIC COPY

LG658477861 Report verification at igi.org



October 9, 2024

IGI Report Number LG658477861

Description LABORATORY GROWN DIAMOND

Shape and Cutting Style ROUND BRILLIANT

Measurements 6.53 - 6.57 X 3.82 MM

GRADING RESULTS

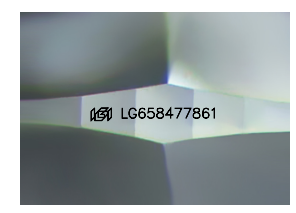
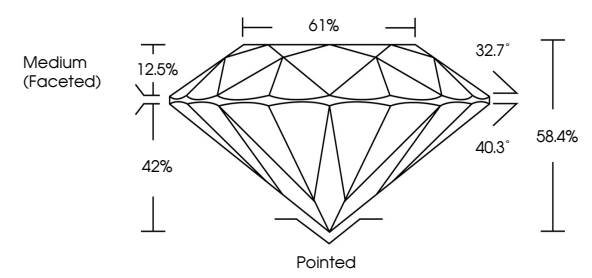
Carat Weight 1.01 CARAT

Color Grade D

Clarity Grade VS 2

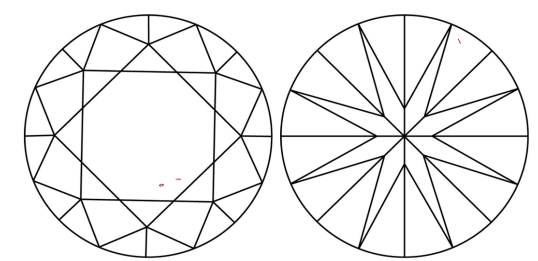
Cut Grade EXCELLENT

PROPORTIONS



Sample Image Used

CLARITY CHARACTERISTICS



KEY TO SYMBOLS

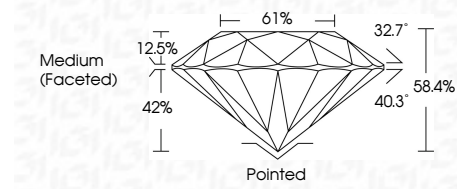
Red symbols indicate internal characteristics. Green symbols indicate external characteristics.

COLOR

D E F G H I J Faint Very Light Light

CLARITY

IF VS 1-2 VS 1-2 SI 1-2 I 1-3 Internally Flawless Very Very Slightly Included Very Slightly Included Slightly Included Included



ADDITIONAL GRADING INFORMATION

Polish EXCELLENT

Symmetry EXCELLENT

Fluorescence NONE

Inscription(s) IGI LG658477861

Comments: As Grown - No indication of post-growth treatment. This Laboratory Grown Diamond was created by High Pressure High Temperature (HPHT) growth process. Type II

October 9, 2024 IGI Report Number LG658477861 Description LABORATORY GROWN DIAMOND Shape and Cutting Style ROUND BRILLIANT Measurements 6.53 - 6.57 X 3.82 MM

GRADING RESULTS

Carat Weight 1.01 CARAT

Color Grade D

Clarity Grade VS 2

Cut Grade EXCELLENT

ADDITIONAL GRADING INFORMATION

Polish EXCELLENT

Symmetry EXCELLENT

Fluorescence NONE

Inscription(s) IGI LG658477861

Comments: As Grown - No indication of post-growth treatment. This Laboratory Grown Diamond was created by High Pressure High Temperature (HPHT) growth process. Type II



Summary table of report details: October 9, 2024, IGI Report No. LG658477861, ROUND BRILLIANT, 6.53 - 6.57 X 3.82 MM, 1.01 CARAT, D, VS 2, EXCELLENT, 58.4%, 61%, Medium (Faceted), Pointed, EXCELLENT, EXCELLENT, NONE, IGI LG658477861.