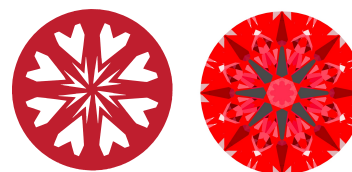




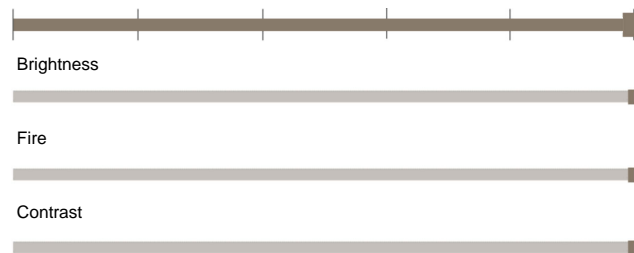
Light Performance Grade: Exceptional



Ideal-Scope representation

Low Moderate High Superior Exceptional

Light Performance



COLOR

D E F G H I J Faint Very Light Light

CLARITY

IF VS 1-2 VS 1-2 SI 1-2 I 1-3 Internally Flawless Very Very Slightly Included Very Slightly Included Slightly Included Included

ELECTRONIC COPY

LABORATORY GROWN DIAMOND REPORT

October 10, 2024 IGI Report Number LG658479084 Description LABORATORY GROWN DIAMOND Shape and Cutting Style ROUND BRILLIANT Measurements 6.80 - 6.86 x 4.20 mm

GRADING RESULTS

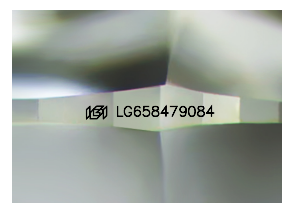
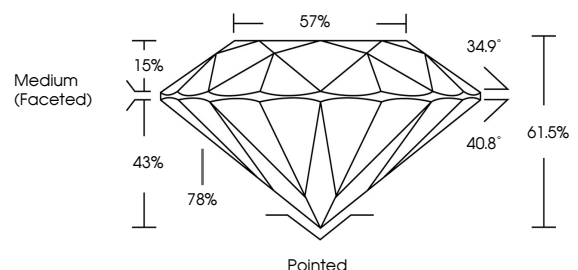
Carat Weight 1.20 CARAT Color Grade E Clarity Grade INTERNALLY FLAWLESS Cut Grade IDEAL

ADDITIONAL GRADING INFORMATION

Polish EXCELLENT Symmetry EXCELLENT Fluorescence NONE Inscription(s) LG658479084

Comments: HEARTS & ARROWS As Grown - No indication of post-growth treatment. This Laboratory Grown Diamond was created by High Pressure High Temperature (HPHT) growth process. Type II

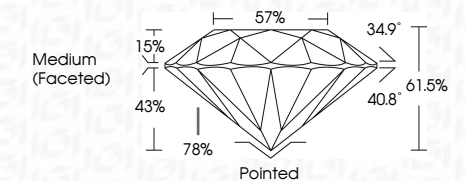
PROPORTIONS



Sample Image Used



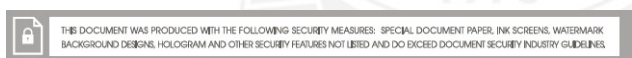
October 10, 2024 IGI Report Number LG658479084 Description LABORATORY GROWN DIAMOND Shape and Cutting Style ROUND BRILLIANT Measurements 6.80 - 6.86 X 4.20 MM GRADING RESULTS Carat Weight 1.20 CARAT Color Grade E Clarity Grade INTERNALLY FLAWLESS Cut Grade IDEAL



ADDITIONAL GRADING INFORMATION

Polish EXCELLENT Symmetry EXCELLENT Fluorescence NONE Inscription(s) LG658479084

Comments: HEARTS & ARROWS As Grown - No indication of post-growth treatment. This Laboratory Grown Diamond was created by High Pressure High Temperature (HPHT) growth process. Type II



October 10, 2024 IGI Report No LG658479084 ROUND BRILLIANT 6.80 - 6.86 X 4.20 MM 1.20 CARAT E Color Grade E IF IDEAL 61.5% 57% Medium (Faceted) Pointed EXCELLENT EXCELLENT NONE LG658479084 Comments: HEARTS & ARROWS As Grown - No indication of post-growth treatment. This Laboratory Grown Diamond was created by High Pressure High Temperature (HPHT) growth process.