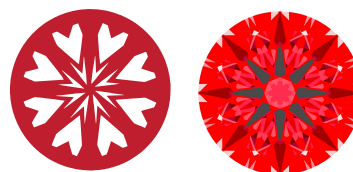




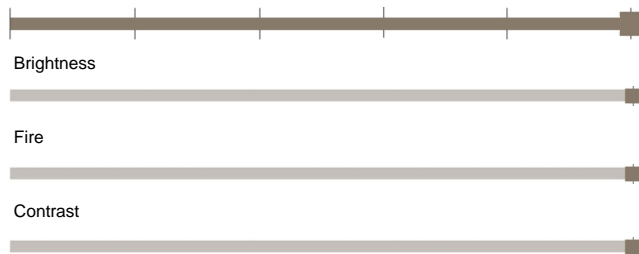
Light Performance Grade: Exceptional



Ideal-Scope representation

Low Moderate High Superior Exceptional

Light Performance



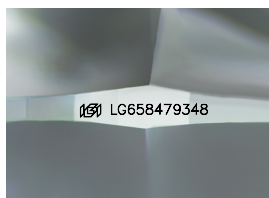
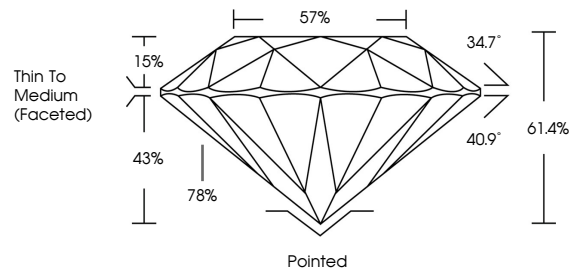
COLOR

D E F G H I J Faint Very Light Light

CLARITY

Table with 5 columns: IF, VS 1-2, VS 1-2, SI 1-2, I 1-3. Rows: Internally Flawless, Very Very Slightly Included, Very Slightly Included, Slightly Included, Included

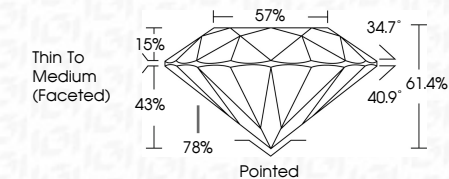
PROPORTIONS



Sample Image Used



October 10, 2024
IGI Report Number: LG658479348
Description: LABORATORY GROWN DIAMOND
Shape and Cutting Style: ROUND BRILLIANT
Measurements: 7.29 - 7.31 X 4.48 MM
GRADING RESULTS
Carat Weight: 1.46 CARAT
Color Grade: E
Clarity Grade: VS 2
Cut Grade: IDEAL



ADDITIONAL GRADING INFORMATION

Polish: EXCELLENT
Symmetry: EXCELLENT
Fluorescence: NONE
Inscription(s): IGI LG658479348
Comments: HEARTS & ARROWS
This Laboratory Grown Diamond was created by Chemical Vapor Deposition (CVD) growth process. Type IIa



IGI

ELECTRONIC COPY

LABORATORY GROWN DIAMOND REPORT

October 10, 2024
IGI Report Number: LG658479348
Description: LABORATORY GROWN DIAMOND
Shape and Cutting Style: ROUND BRILLIANT
Measurements: 7.29 - 7.31 x 4.48 mm

GRADING RESULTS

Carat Weight: 1.46 CARAT
Color Grade: E
Clarity Grade: VS 2
Cut Grade: IDEAL

ADDITIONAL GRADING INFORMATION

Polish: EXCELLENT
Symmetry: EXCELLENT
Fluorescence: NONE
Inscription(s): IGI LG658479348

Comments: HEARTS & ARROWS
This Laboratory Grown Diamond was created by Chemical Vapor Deposition (CVD) growth process. Type IIa



Summary table of report details: October 10, 2024, IGI Report No LG658479348, ROUND BRILLIANT, 7.29 - 7.31 X 4.48 MM, 1.46 CARAT, E, VS 2, IDEAL, 61.4%, 57%, Thin To Medium (Faceted), Pointed, EXCELLENT, EXCELLENT, NONE, IGI LG658479348, Comments: HEARTS & ARROWS, This Laboratory Grown Diamond was created by Chemical Vapor Deposition (CVD) growth process. Type IIa